

UTRGV™

.....
School of Music



**2022 SUMMER
MUSIC CAMPS**

BAND
ORCHESTRA
SAXOPHONE
PIANO



2022 Summer Band, Orchestra and Piano Camp Grades 9-12

DATES

Band and Orchestra: June 12 to 17, 2022

Piano: June 13 to 17, 2022

Saxophone: June 13 to 24, 2022

OBJECTIVE

The UTRGV High School Band, Orchestra, Saxophone and Piano Camp consists of one week of intense training for piano and all wind and string instruments for students grades 9 to 12. Participants will learn under the expert guidance of UTRGV's outstanding faculty as well as local professionals and guest artists. The camp will culminate with a grand final concert that will showcase the student's musical achievements.

DAILY SCHEDULE: BAND AND ORCHESTRA

The Band and Orchestra camp will take place at the UTRGV Edinburg campus. Students will participate in daily ensemble rehearsals, chamber music sessions, and also masterclasses on their instruments. Assignments for chamber groups will be done based on the student's large ensemble audition as well as level of proficiency. Masterclasses and chamber music groups are taught by the UTRGV instrumental faculty and members of the camp staff, allowing each student to receive personalized attention throughout the week.

Monitored leisure activities including social and musical events will also be part of the daily schedule. Students will be under close supervision by camp counselors at all times during all activities.

OPENING SUNDAY SCHEDULE – June 12, 2022

9:00 am – 1:00 pm	Check-in	EPAC-A Lobby
	<i>(audition time and place will be provided at check-in)</i>	
1:00 pm	Auditions	Locations TBA
4:00 pm	Dinner	EPAC Courtyard
	<i>(parents may stay for dinner but must pay separate at the dining hall)</i>	
5:30 pm	General camp meeting/audition results	EPAC-A Concert Hall
6:30 pm	Orchestra and Band rehearsals	EPAC-A1.315 / A1.320
7:00 pm	Ice-cream social	EPAC Courtyard
8:00 pm	End of opening day/dismissal	

DAILY SCHEDULE – Monday through Wednesday, June 13-15, 2022

9:00 am	Announcements/Warm-up	EPAC-A1.315 / A1.320
9:30 am – 10:45 am	Orchestra and Band rehearsals	EPAC-A1.315 / A1.320
11:00 am	Sectionals	EPAC-C and other TBA
12:00 pm	Lunch	EPAC Courtyard

1:00 pm – 2:15 pm	Orchestra and Band rehearsals	EPAC-A1.315 / A1.320
2:15 pm	Leisure/free time	
3:00 pm	Lessons and masterclasses	EPAC-C and other TBA
4:00 pm	Chamber ensembles sessions	EPAC-C and other TBA
5:00 pm	Concerts, clinics and other activities	Library Auditorium
6:30 pm	End of day/dismissal	

THURSDAY SCHEDULE – June 16, 2022

9:00 am	Announcements/Warm-up	EPAC-A1.315 / A1.320
9:30 am – 10:45 am	Orchestra and Band rehearsals	EPAC-A1.315 / A1.320
11:00 am	Sectionals	EPAC-C and other TBA
12:00 pm	Lunch	EPAC Courtyard
1:00 pm – 2:15 pm	Orchestra and Band rehearsals	EPAC-A1.315 / A1.320
2:15 pm	Leisure/free time	
3:00 pm	Chamber ensembles sessions	EPAC-C and other TBA
4:00 pm	Chamber ensembles dress rehearsal	Library Auditorium
5:30 pm	Chamber ensembles concert	Library Auditorium
7:00 pm	End of day/dismissal	

FINAL FRIDAY SCHEDULE – June 17, 2022

9:00 am	Announcements/Warm-up	EPAC-A1.315 / A1.320
9:30 am – 10:45 am	Orchestra and Band rehearsals	EPAC-A1.315 / A1.320
11:00 am	Sectionals	EPAC-C and other TBA
12:00 pm	Lunch	EPAC Courtyard
1:00 pm – 2:15 pm	Orchestra and Band rehearsals	EPAC-A1.315 / A1.320
2:15 pm	Leisure/free time	
3:00 pm – 4:00 pm	Orchestra and Band rehearsals	EPAC-A1.315 / A1.320
5:30 pm	Symphony Orchestra Concert	EPAC-A Stage
	(warm-up time 4:00 pm)	EPAC-A1.315
6:00 pm	Band Concert	EPAC-A Stage
	(warm-up time 4:30 pm)	EPAC-A1.320
7:00 pm	Camp ends	

DAILY SCHEDULE: PIANO

The Piano camp will take place at the UTRGV Brownsville campus. Students will participate in daily masterclasses, ensemble sessions as well as theory and sight-reading classes taught by the UTRGV piano faculty, members of the camp staff, and guest artists, allowing each student to receive personalized attention throughout the week. Piano students must audition with two contrasting pieces performed from memory. **Students are encouraged to audition by submitting a video link ahead of time (YouTube or other online video streaming format) to Dr. Kenneth Saxon's email at kenneth.saxon@utrgv.edu no later than June 6, 2022.**

Monitored leisure activities including social and musical events will also be part of the daily schedule. Students will be under close supervision by camp counselors at all times during all activities.

OPENING MONDAY – June 13, 2022

12:00 pm	Check-in and Welcome	BMSLC 1.217
1:00 pm	Masterclass	BMSLC 1.217
2:00 pm	Theory skills test	BMSLC 1.217
2:30 pm	Ice-cream social	BMSLC Courtyard
3:00 pm	Duets and practice	Locations TBA
5:00 pm	End of day/dismissal	

TUESDAY (Day 2, June 14, 2022)

12:00 pm	Guest recital	BMSLC 1.217
1:00 pm	Masterclass	BMSLC 1.217
2:30 pm	Break/snack	BMSLC Courtyard
3:00 pm	Sight reading class	BMSLC 1.217
4:00 pm	Lessons and practice	Locations TBA
5:00 pm	End of day/dismissal	

WEDNESDAY (Day 3, June 15, 2022)

12:00 pm	Masterclass	BMSLC 1.217
2:00 pm	Theory and scales class	BMSLC 1.217
2:30 pm	Break/snack	BMSLC Courtyard
3:00 pm	Ensembles and lessons	Locations TBA
4:00 pm	Lessons and practice	Locations TBA
5:00 pm	End of day/dismissal	

THURSDAY (Day 4, June 16, 2022)

12:00 pm	Special guest recital	BMSLC 1.217
1:00 pm	Masterclass	BMSLC 1.217
2:30 pm	Break/snack	BMSLC Courtyard
3:00 pm	Ensembles and lessons	Locations TBA
4:00 pm	Lessons and practice	Locations TBA
5:00 pm	End of day/dismissal	

FRIDAY (Day 5, June 17, 2022)

12:00 pm	Dress rehearsal for Final Concert	BMSLC 1.217
2:30 pm	Movie/snack	BMSLC 1.217
4:00 pm	Lessons and practice	Locations TBA
5:00 pm	Leisure/Free time	
7:00 pm	FINAL CONCERT	BMSLC 1.217

DAILY SCHEDULE: SAXOPHONE

The UTRGV Summer Saxophone Camp is 10 days of intensive study combined with numerous musical opportunities offered at the School of Music on the Edinburg campus. It is open to students from the 9th grade to adults. Participants will take place in daily sectionals, chamber and large ensemble sessions taught by the UTRGV saxophone faculty and members of the camp staff, allowing each student to receive personalized attention.

HOUSING AND MEALS

Overnight room accommodations are not be available, all camp participants must return home by the end of the day each day of camp. All meals/snacks listed in the schedule are included in the tuition and will be served in the UTRGV School of Music courtyards

unless indicated otherwise. On occasion, students will participate in extra meals such as evening pizza parties, ice cream or cookouts. Arrival and departure of students will take place only during specific posted times. UTRGV will not host students outside scheduled camp dates and posted times.

COST

Registration for the seven-day camp is \$200 which includes participation in ensembles, lessons, classes, masterclasses, chamber music, lunch/snack, social activities, a t-shirt and a camp decal. Registration payments can be made via check/money order made out to UTRGV School of Music or online at

https://webapps.utrgv.edu/it/em/index.cfm?event=Public.View.Courses&Event_id=1262.

All-State students receive a 40% discount on tuition.

***NOTE:** The COVID-19 situation may evolve or change. We will make every effort to create an inspirational experience for all participants. However, circumstances and guidelines may change and the Music Camp will adjust as needed. Alternative plans and schedules may be necessary due to situations beyond our control. Refunds will be offered if the event needs to be cancelled.*

ELIGIBILITY

The camp welcomes all piano, woodwind, brass, percussion and string students grades 9-12 (saxophone camp is also open to adults). All students are required to have played their instrument for at least two years.

AUDITIONS

All Band and Orchestra Camp participants are required to audition for seating in the band and/or orchestra and for chamber music group assignments. Audition materials will be available through the UTRGV School Music website in early May. Piano students are encouraged to audition by submitting a video link ahead of time (YouTube or other online video streaming format) to Dr. Kenneth Saxon's email at kenneth.saxon@utrgv.edu no later than June 6, 2022.

REGISTRATION INFORMATION

Camp enrollment will be limited to 300 students for band and orchestra instruments and 20 students for piano and it will be filled on a first-come, first-served basis. **Deadline for applications and registration payments is Friday, June 3, 2022.** Tuition payments will not be accepted on the first day of camp, payments can be made ahead of time by check/money order made out to UTRGV School of Music or online with credit/debit card at https://webapps.utrgv.edu/it/em/index.cfm?event=Public.View.Courses&Event_id=1262.

- Registration must be done by a parent or guardian.
- Parents/guardians will be asked complete the UTRGV Liability Release Form and provide the following information:
 - Insurance provider, member ID, group number, phone number (if available).
 - Physician name, address and phone number (if available).
 - Emergency contact information
 - Medical information
 - Contact information
 - UTRGV Summer Program Code of Conduct and Disciplinary Procedures

CAMP FACULTY AND STAFF

The camp staff consists of UTRGV music faculty, administrative staff, local music teachers, visiting artists, as well as counselors selected from the student body within the School of Music. Music faculty will guide all aspects of lessons, masterclasses, chamber music and classes. Band and Orchestra will be under the direction of ensemble conductors on the faculty of the UTRGV School of Music. Only the most responsible and mature students enrolled in graduate and undergraduate music degrees at UTRGV are selected as members of the counseling staff. All staff members are instructed in matters of supervising young people who are our guests at the music camp.

LEISURE

A number of leisure opportunities will be available to students during the afternoon hours. Activities range from recitals to talent show and movies. All events will be supervised by camp counselors. Evening activities are included in the camp tuition and participation is optional (students opting out of evening activities must inform a staff member before leaving campus for the day).

REGISTRATION PAYMENT

Registration payments must be made before June 3, 2022. Payments can be made online or by check. If paying by mail, please make check or money order payable to UTRGV School of Music. No payments will be accepted on the first day of camp. Payments can also be made online at

https://webapps.utrgv.edu/it/em/index.cfm?event=Public.View.Courses&Event_id=1262.

All-State students receive a 40% discount on tuition.

CAMP RULES AND REGULATIONS

- Each camp member will be responsible for his/her own valuables. Money, watches, electronics, and jewelry should be properly safeguarded (lockers are not be available).
- Running, playing, throwing, and all other athletic activities are not allowed in the university halls, these must take place outside the buildings.
- The following are strictly prohibited on campus at all times: fireworks or explosives of any kind, firearms or munitions, pets, illegal drugs, alcoholic beverages, as well as any other items that could cause bodily harm or damage. Smoking is also not allowed anywhere on campus. All types of fire, incense, or candles are also prohibited.
- Camp participants are to be properly dressed. University buildings are public areas, all persons on campus must wear shoes and be appropriately clothed.
- All camp members are expected to respect the rights and property of others. Disturbing behavior will not be allowed.
- Additional basic rules of conduct will be addressed during the welcome meeting. Failure to follow university and camp regulations could result in early dismissal from the camp with no refund of tuition and fees.
- Medical care will be available from the University Health Center for all students attending the camp if needed.
- Cellular phones and all other electronic devices must be turned off for rehearsals, sectionals, lessons, classes, masterclasses and during performances.
- Student parking is available on campus and it is included in the camp's tuition (must be requested in advance).

FAQ's

Refund policy

Cancellation Prior to the First Day of Camp:

Any registration cancellation done by 12:00 p.m. on the Friday prior to the start of camp will be eligible for a full refund of camp tuition except for a \$50 non-refundable fee (Band/Orchestra and Piano Camps only). Parents must call the camp office if a cancellation must be made. Refunds will be issued in about two to four weeks after cancellation.

Cancellation After the First Day of Camp:

Any cancellations following the beginning of camp (cancellations done after 12 p.m. on the Friday before camp begins) are ineligible to receive a refund of tuition and fees.

How to contact a student

Any parents needing to contact their child may call the camp office at (956) 665-8713 between 8:00 AM and 5:00 PM. Messages will be delivered to the counselor who supervises him/her. Except for emergencies, students are not allowed to make personal calls from the camp's office.

Medical Care

Medical care will be available from the University Health Center for all students participating in the music camp while on campus. In the improbable case a participant is referred by the Health Center to outside medical facilities, the medical expense will be charged to the parent or guardian. Please make sure to bring family insurance information with you in the unlikely event of an emergency.

Final Grand Concerts

The camp concludes with a grand concert showcasing students' preparation during the week. Final concerts will take place on the last day of the camp as stated in the schedule. Parents, family, and friends are invited to attend, admission is free. Information will be sent to all participants in the weeks prior to camp. Chamber music performances of students in band and orchestra will take place Thursday evening and they are also free of charge and open to the public. Information will be sent to participants in the weeks prior to camp.

T-shirts and camp decals

The official UTRGV Summer Music Camp t-shirt and decal will be available on the first day of camp during check-in and they are included in the tuition. UTRGV official merchandise may be purchased at the Campus Bookstore.

Driving to campus and on campus parking

Students driving to camp must report daily with the counseling staff upon arrival and prior to departure. Participants may not offer rides to other students without prior authorization. All participants who are driving to camp must complete the vehicle's information at registration in order to obtain a temporary parking permit. Parking information will also be available upon check-in on the first day of camp. Parking is open to the public on weekends, regulations are in effect Monday through Friday. Refer to last pages for both UTRGV Edinburg and Brownsville campus maps. The Performing Arts Complex A in Edinburg is number 5 on the map, in Brownsville, the Music, Science and Learning Center is 28 on the map.

Late or early arrivals/departures during camp

Participants will be allowed to leave camp for circumstances related to illness or family emergency. If the participant is a minor, a parent or guardian must notify the camp office at (956) 665-8713. The counseling staff will then be notified, and the camp will provide assistance to the student in making arrangements for departure as needed. If a camper is

expected to arrive late to camp, the late arrival must be informed in advance including the exact time the student is set to arrive. Attendance to all chamber and large ensemble rehearsals is required for the entire duration of the camp.

Late or early arrivals/departures before or after camp

UTRGV cannot accommodate overnight stays for students before, during or after camp. Staff will not be available to supervise students prior to the first scheduled day of camp nor following the conclusion of camp. Parents must make proper travel arrangements so that the student arrives on time in the morning and leaves at the conclusion of each day.

Last day of camp

Final concerts for Band and Orchestra will begin at 5:30 pm and should conclude by 7:00 pm or 7:30 pm at the latest, students are expected to be on campus at least 90 minutes prior to their performance time for ensemble warm-up. The piano final concert will take place at 7:00 pm on the last day of camp (refer to the schedules above).

Computer and Internet Access

University owned computer equipment as well as Wi-Fi access through the university server will not be available during the camp. Participants may bring personal electronic devices such as tablets, cell phones, etc. at their own risk; UTRGV assumes no responsibility for lost or stolen items.

What to bring to Camp

Make sure to mark all items with your name.

1. Your instrument/s (band and orchestra students)
2. Accessories and supplies for your instrument as well as pencils
3. Any sheet music you might need or want to practice (etude books, solos, etc.)
4. Money: most activities will be provided as part of the camp. Participants may want to bring money for drinks, snacks, souvenirs, etc. We suggest only bring what is needed for vending machines.

UTRGV EDINBURG CAMPUS MAP

The University of Texas
Rio Grande Valley
Edinburg Campus

UTRGV Brownsville parking permits are valid in the following ZONES:

Student - Zone 1 & Zone 2 (Zone 3 after 5pm)

Faculty/Staff - Zone 1, Zone 2 & Zone 3



All vehicles parked on campus must be registered with the UTRGV Parking & Transportation Office and must properly display an appropriate permit.

1. ESWOT - Social Work and Occupational Therapy	17. ESTUN - Student Union	33. ELIBR - University Library	46. EHABW - Health Affairs Building West	57. ELAMR - Lamar E
2. EITTB - International Trade & Technology	18. EDBCX - Dining & Ballroom Complex	34. ELABS - Liberal Arts Building South	47. EHABW - Health Affairs Building West Classroom A	58. EREBL - Research Education-(School of Medicine)
3. ECOXT - Orville Cox Tennis Center	19. EHPE2 - Health & Physical Education II		48. EHABW - Health Affairs Building West Auditorium	59. EMEBL - Medical Education-(School of Medicine)
4. ETRAK - Track & Soccer Field	20. EPOB4 - Engineering Portable	35. ECDCR - Child Development Center	49. ELABN - Liberal Arts Building North	60. ESTHC - Student Health Center
5. EPACA - Performing Arts Complex A	21. EENGR - Engineering	36. EARGC - Agroecology Research Community Garden	50. EUNTY - Unity Hall	61. EUREC - University Recreation
6. ESWKH - Southwick Hall	22. EACSB - Academic Services	37. EGRNH - Greenhouse	51. EASFC - Rio Grande Center for Manufacturing	62. EPOB8 - ROTC Storage
7. EPACC - Performing Arts Complex C	23. EPHYS - Physical Science	38. EPOB9-13 - Portable Buildings 9, 10, 11, 12, 13	52. EASFC - Police and Parking & Transportation Offices	63. EROTC - ROTC
8. EPACB - Performing Arts Complex B	24. EIMFD - Intramural Fields	39. EEDUC - Education Complex	53. EASFC - Academic Support Facility	64. EBSBL - Baseball Stadium
9. ESSBL - Executive Tower	25. ETROX - Troxel Hall	40. EMAC - Mathematics & General Classrooms	54. EVLGA - The Village A	65. ESOC - Soccer and Track & Field Complex
10. ESSBL - Student Services Building	26. EHRTG - Heritage Hall	41. ECCTR - Computer Center	55. EVLGB - The Village B	66. EPOB14 - Physical Science Portable
11. ESSBL - Visitors Center	27. EEMLH - Emilia Schunior Ramirez Hall	42. ECOBE - Robert C. Vaccar College of Business and Entrepreneurship	56. EVLBD - The Village D	67. EIEAB - Interdisciplinary Engineering & Academic Building
12. EMSAC - Mathematics & Science Academy	28. ESRAH - Sugar Road Annex	43. ECULP - Central Utility Plant	57. EVLBE - The Village E	
13. EMAS - Marialice Shary Shivers	29. EHPE1 - Health & Physical Education Complex	44. EHABE - Health Affairs Building East	58. EVLGF - The Village F	
14. ESTAC - Student Academic Center	30. EPLAN - Fieldhouse	45. EBNSB - Behavioral Neurosciences	59. EEHSB - Environmental Health & Safety	
15. EUCTR - University Center	31. ESCNE - H.E.B. Planetarium		60. ETHER - Thermal Storage Tank	
16. ECHAP - Chapel	32. ELCTR - The Learning Center			

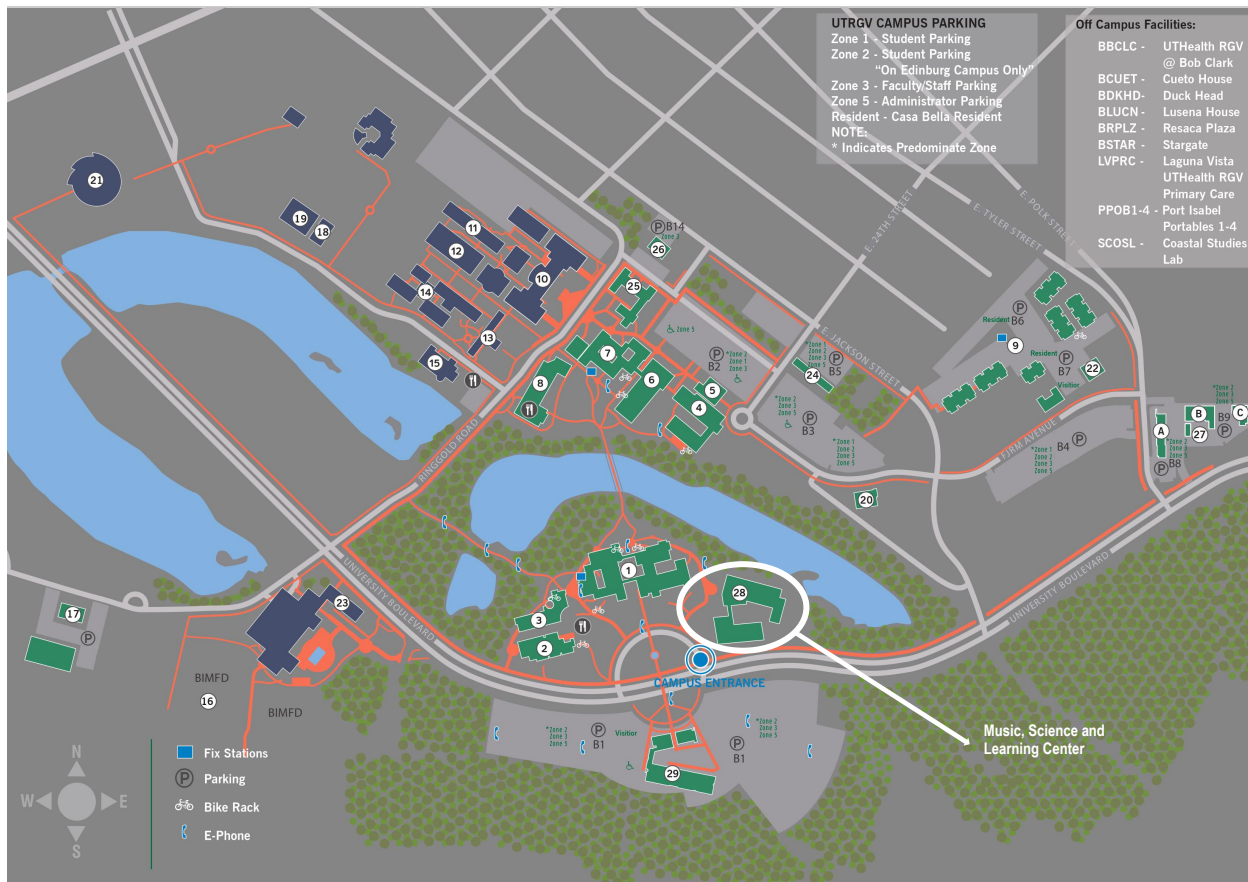
UTRGV BROWNSVILLE CAMPUS MAP

The University of Texas
Rio Grande Valley
 Brownsville Campus

UTRGV Brownsville parking permits are valid in the following ZONES:

Student - Zone 1 & Zone 2 (Zone 3 after 5pm)

Faculty/Staff - Zone 1, Zone 2 & Zone 3



All vehicles parked on campus must be registered with UTRGV Parking & Transportation and must properly display an appropriate permit.

1. Main Building	BMAIN	11. Vocation Trades Shops	BVOTS	21. The Arts Center	BTACB
2. Sabal Hall	BSABH	12. Cortez Hall	BCRTZ	22. University Police	BUNPB
3. University Library	BLIBR	13. Cavalry Hall	BCAVL	23. Recreation, Education and Kinesiology Center	BUREK
4. Biomedical Research & Health	BBRHB	14. Rustenberg Hall	BRUST	24. Portable Buildings	BPOB1
5. Luis V. Colom Biomedical Research Facility	BLCBR	15. Bookstore	BSTOR		BPOB2
6. Life & Health Sciences Biology Wing	BLHSB	16. Intramural Fields	BIMFD	25. UTHealth Houston RAHC	BRAHC
7. Life & Health Science	BLHSB	17. Academic Support Facilities	BASFC	26. North Office Building	BNOBL
8. Student Union	BSTUN	18. Gymnasium Annex	BGYMA	27. Vaquero Plaza (Buildings A, B & C)	BVAQP
9. Casa Bella	BCASA	19. Garza Gymnasium	BGYMN	28. Music Science & Learning Center	BMSLC
10. Science, Engineering & Technology	BSETB	20. Research Office Building	BROBL	29. Interdisciplinary Academic Building	BINAB