



National Institute of Environmental Health Sciences
Your Environment. Your Health.

***Presentation for the
University of Texas Rio Grande Valley***

***¡JUNTOS AL ÉXITO!
EMPOWERING EXCELLENCE PROGRAM***

***Programs & Grant Funding Opportunities for
Hispanic Serving Institutions
NIH and NIEHS***

Alfonso R. Latoni, Ph.D.
Senior Advisor to the Division Director & Scientific Review Officer
Division of Extramural Research and Training
National Institute of Environmental Health Sciences
National Institutes of Health

University of Texas Rio Grande Valley
20 March 2024



AGENDA

Very Brief Introduction to the National Institutes of Health (NIH) and the NIEHS.

A Few Programs (not exclusive) at the NIH and the NIEHS that are Suited for Hispanic Serving Institutions.

How and when a Program Officer/Director should be contacted regarding grant funding opportunities?

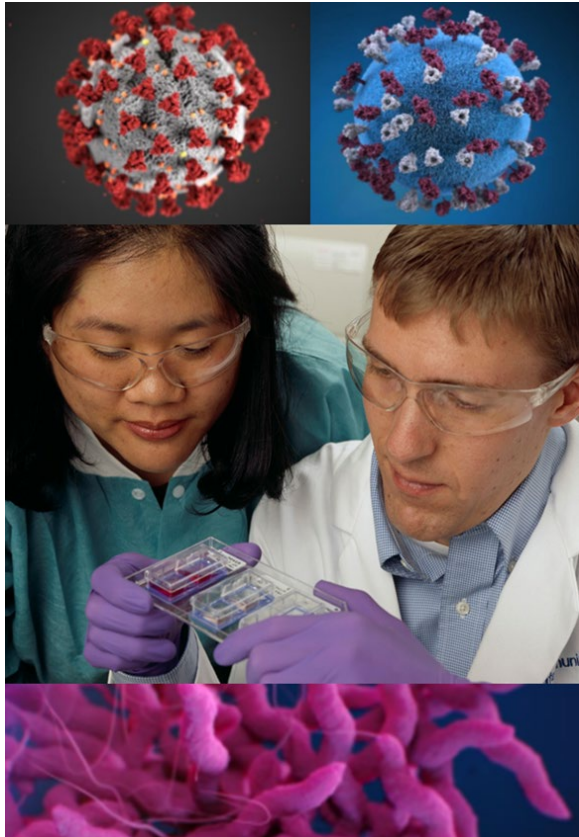
A few tips on what to do and what to avoid doing to write successful grant applications/proposals?

Who We Are?

- Largest public funder of biomedical, behavioral, and social research in the world.



The NIH Mission



To seek fundamental knowledge about the nature and behavior of living systems and the application of that knowledge to enhance health, lengthen life, and reduce illness and disability.



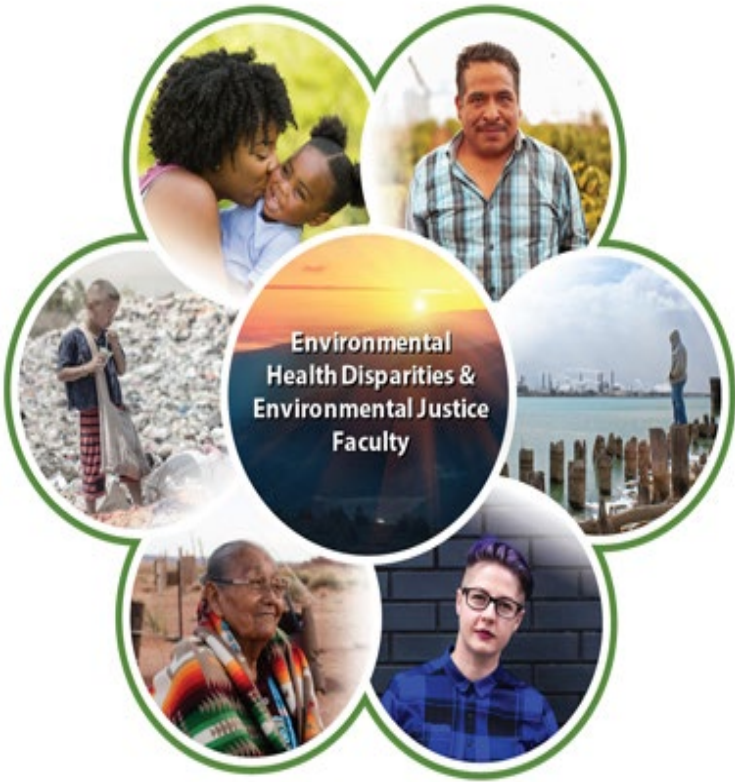
Where's the funding

- National Institutes of Health
- 27 Institutes and Centers (ICs)
- Each IC has its own
 - Mission,
 - Priorities,
 - Budget, and
 - Funding strategy.



The NIEHS Mission

Our mission is to discover how the environment affects people in order to promote healthier lives.



The National Institute of Environmental Health Sciences

The mission of the NIEHS is to discover how the environment affects people in order to promote healthier lives.

- Focus is on environmental factors rather than a particular disease, organ system, or segment of the population
- Supports the active engagement of affected communities in research



Where, Where, Where, What, What, What, When, When, When, Who, Who, Who?



- Where do I start?
- Where's the funding?
- Where do I turn when I need help or advice?
- What opportunities are available & how can I find them?
- What's the application process & how long does it take?



**Where do I turn when I
need help or advice?**

The NIH Extramural Team

Program
Official (PO)

Scientific
Review
Officer (SRO)

Grants
Management
Officer (GMO)

Related resource ... [Understand Staff Roles](#)

Program Official

- ▶ Scientific portfolio of awards within the mission of an institute
- ▶ Initiative development
- ▶ Provides programmatic, scientific, and/or technical guidance pre-application, submission, and post-review
- ▶ Recommends applications to be considered for award to the IC director
- ▶ Post-award oversight by monitoring research progress

Scientific Review Officer

- ▶ Responsible for scientific and technical review
 - Ensures fair, independent, expert, timely, and unbiased evaluation of scientific and technical merit
 - Provides a summary of the evaluation
 - Reviews applications for completeness and conformance with application requirements
- ▶ Point of contact for applicants during the review process

Grants Management Officer

- ▶ Responsible for completion of business management requirements
 - Evaluates reviewed applications for administrative content and compliance with policy
 - Negotiates and prepares grant Awards
 - Post-award oversight by monitoring grant activity
 - Interprets grants administration policies

Most Common Funding Mechanisms/Activity Codes Suited for Hispanic Serving Institutions

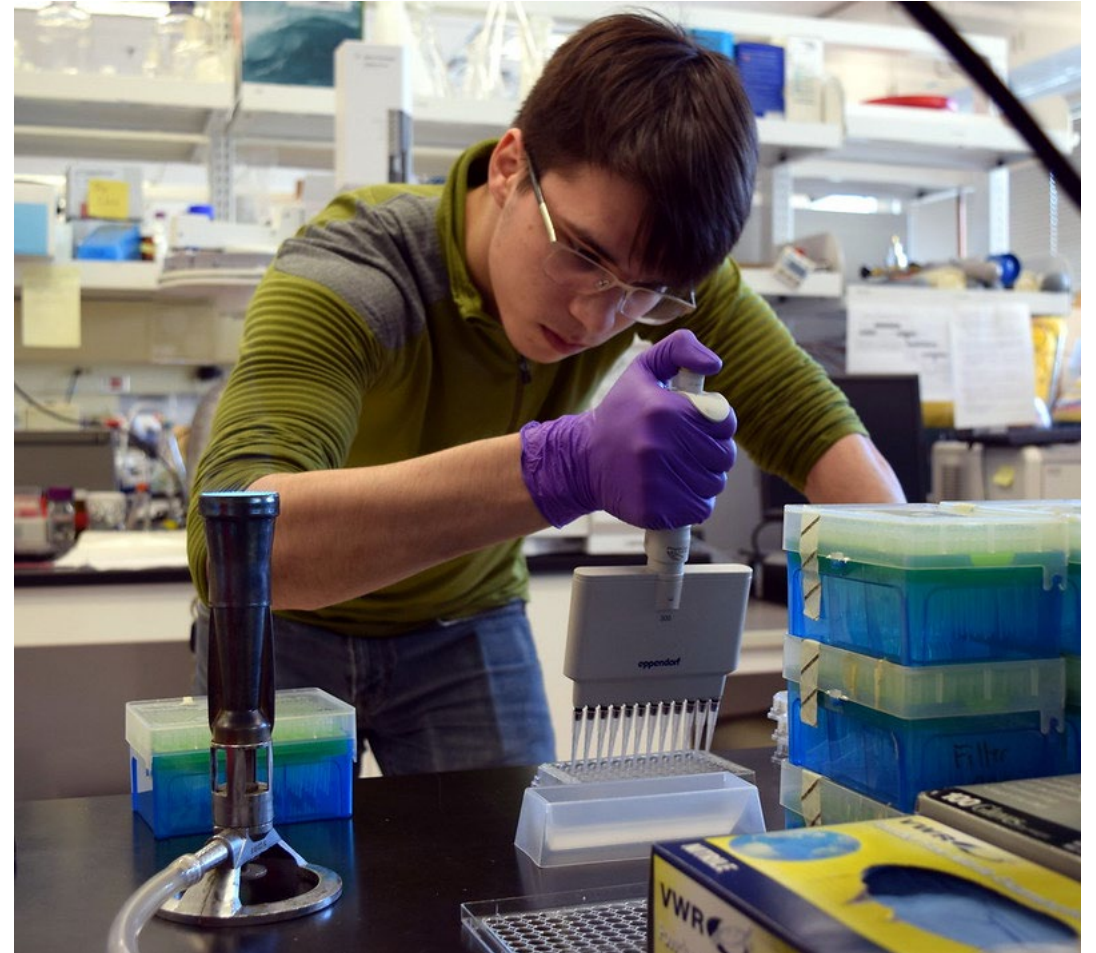
R15 (Research Enhancement Award Program)

AREA and REAP

- What is the R15?
- How to read the R15 Notice of Funding Opportunities (NOFOs)
- The differences between the R15 and the R01
- The differences between AREA and REAP
- Some strategies for success

What is the goal of the R15 program?

- Support meritorious, small scale research grants at institutions that do not receive substantial funding from the NIH
- Provide research opportunities to students who might not otherwise have access to them
- Strengthen the overall research environment at the institution



The R15 at a Glance



- Three-year project period
- 12-page research strategy
- Can request up to \$300,000 in direct costs to be spent over the 3-year project period
- Can be renewed

How is the R15 different from an R01?



- Both are RESEARCH grants
 - R15 should make an important contribution
- R15 scope is more limited
 - Budget, project period smaller than R01
 - Fewer resources may be available at your institution
- Must describe research opportunities for students
- Must describe how the grant will strengthen the research environment of the institution

Two sets of Funding Opportunity Announcements for different types of Institutions

Academic Research Enhancement Award (AREA) for Undergraduate-Focused Institutions

- PAR-21-154 (CT)*
- PAR 21-155 (no CT)*

***Look for re-issuing and for specific NIH Institutes**

Research Enhancement Award Program (REAP) for Health Professional and Graduate Schools

- PAR-21-357 (CT)
- PAR-22-060 (no CT)

Is my Institution eligible for the R15?

AREA

REAP

Institution

Primarily undergraduate

Health Professional School

Graduate School

NIH Funding

Cannot exceed \$6M/year (direct and indirect) for 4 of the last 7 years




Does the component enroll more undergraduates or more graduate students?

For AREA: Do the non-health professional components as a whole meet the funding requirement?

For REAP: Does the Institution as a whole meet the requirement?

Need more help? See R15 page at grants.nih.gov

How do I document eligibility?



Oh no, I forgot to upload a signed letter from my Provost or similar institutional official verifying that my institution meets the eligibility criteria!

**Don't let this be you!
Your application will be
withdrawn**

Am I eligible to apply for an R15?

All Principal Investigators

- Primary appointment at an eligible institution
- Cannot be the Principal Investigator of another NIH Research grant at time of award (other roles OK)

Collaborators

- Do not need to meet these requirements
- But... remember the goals of the R15!
 - does this “strengthen research environment”?
 - does this engage students at your institution?
 - is most of the work being done at your institution?

The art of crafting a successful R15 Application

It's just magnificent



First and foremost, this is a research grant

- **Scientifically interesting**
- **Publishable data**
- **Clear hypothesis**
- **Well justified**
- **Feasible**
- **Scope is realistic**
- **Have needed resources**

Involvement of students is a major goal of the R15

- Present at meetings and conferences (includes lab meeting, campus events)
- Help design experiments
- Collect and analyze data
- Help write manuscripts

How do I show “meaningful involvement”?

- Describe in research strategy, biosketch
- Discuss your history of mentoring students
- Highlight where they have co-authored papers
- Mention how they will be recruited
- Be specific



Help your reviewers by writing a great Application!

- Lay things out logically
- Write for a broad audience
- Be clear and concise, don't use jargon
- Do not assume knowledge of who you are
- Organize the pages
- Proofread, proofread, proofread...
- Know what they are looking for and give it to them!



Thank you!
¡Gracias!

Alfonso R. Latoni, Ph.D.
alfonso.latoni@nih.gov

National Institute of Environmental Health Sciences
<https://www.niehs.nih.gov/>

