

Texas Reefs: Virtual Dive

Artificial Reefs

Man-made underwater structure with the purpose of creating habitat similar to natural reefs. The Texas Clipper became an artificial reef on November 17, 2007, located approximately 17 nautical miles (31 km) NE of South Padre Island, TX.



Mesophotic Reefs

Ecosystems found at depths between 100-490ft below the ocean surface. Examples of communities include corals, sponges, and algae.

Reef Exploration

- Scuba
- Remotely Operated Vehicles (ROVs)
- Human Occupied Vehicles (HOVs)
- Autonomous Underwater Vehicles (AUVs)



[What is an ROV?](#)

Activity:

Identify these organisms in the 360 image from the Flower Garden Banks National Marine Sanctuary.

<https://sanctuaries.noaa.gov/vr/flower-garden-banks/barrel-sponge.html>



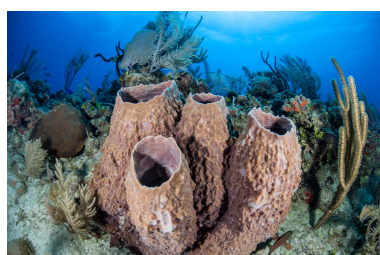
Pseudodiploria strigosa
Symmetrical Brain Coral



Orbicella franksi
Boulder Star Coral



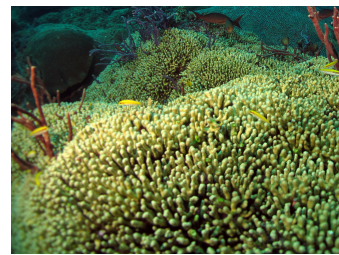
Orbicella annularis
Lobed Star Coral



Xestospongia muta
Giant Barrel Sponge



Thalassoma bifasciatum
Bluehead Wrasse



Madracis auretenra
Yellow Pencil Coral

