

School of Medicine

*Department of Primary and
Community Care

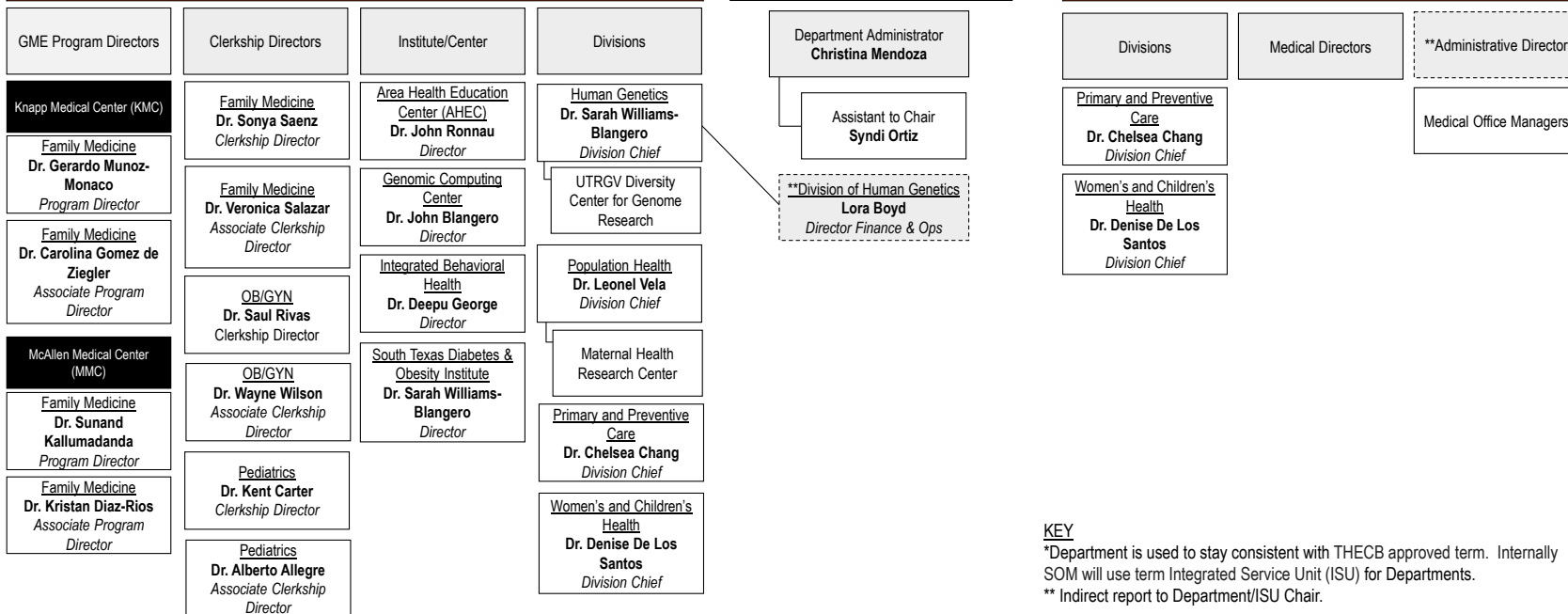
School of Medicine Dean
Dr. Michael Hocker

*Department of Primary and Community Care
Dr. Jeremy Gibson, Interim Chair

Academic and Research

Department / Division Operations

Clinical Practice



KEY

*Department is used to stay consistent with THECB approved term. Internally SOM will use term Integrated Service Unit (ISU) for Departments.

** Indirect report to Department/ISU Chair.