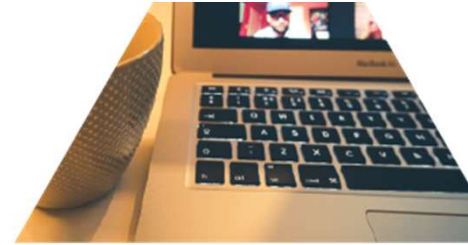




Office of Student Success – Division of Academic Affairs

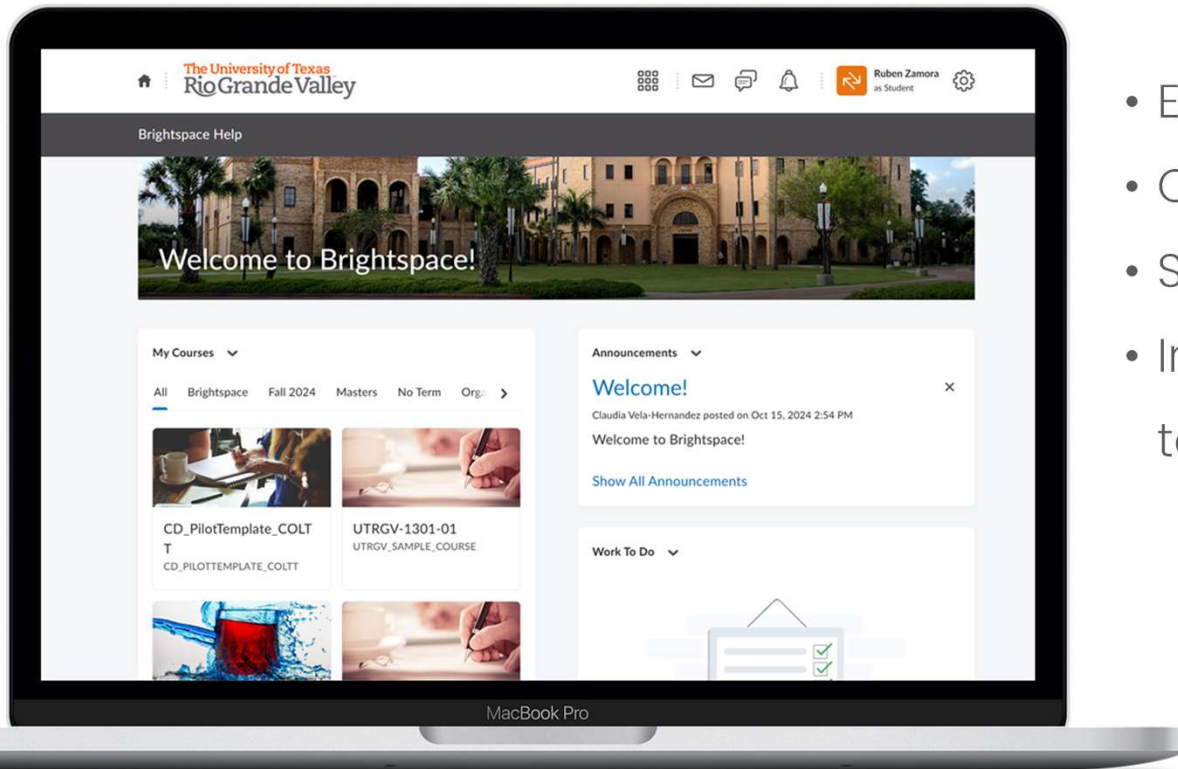
Brightspace Implementation



#UTRGVCOLTT



Why Brightspace?



- Enhanced learning experience
- Customizable and scalable
- Supports various learning styles
- Integrates with other educational tools

Features of Brightspace



Content Creation

Easy-to-use tools for creating and managing course content



Assessment

Quizzes, assignments, and gradebook



Communication

Discussion boards, announcements, and messaging

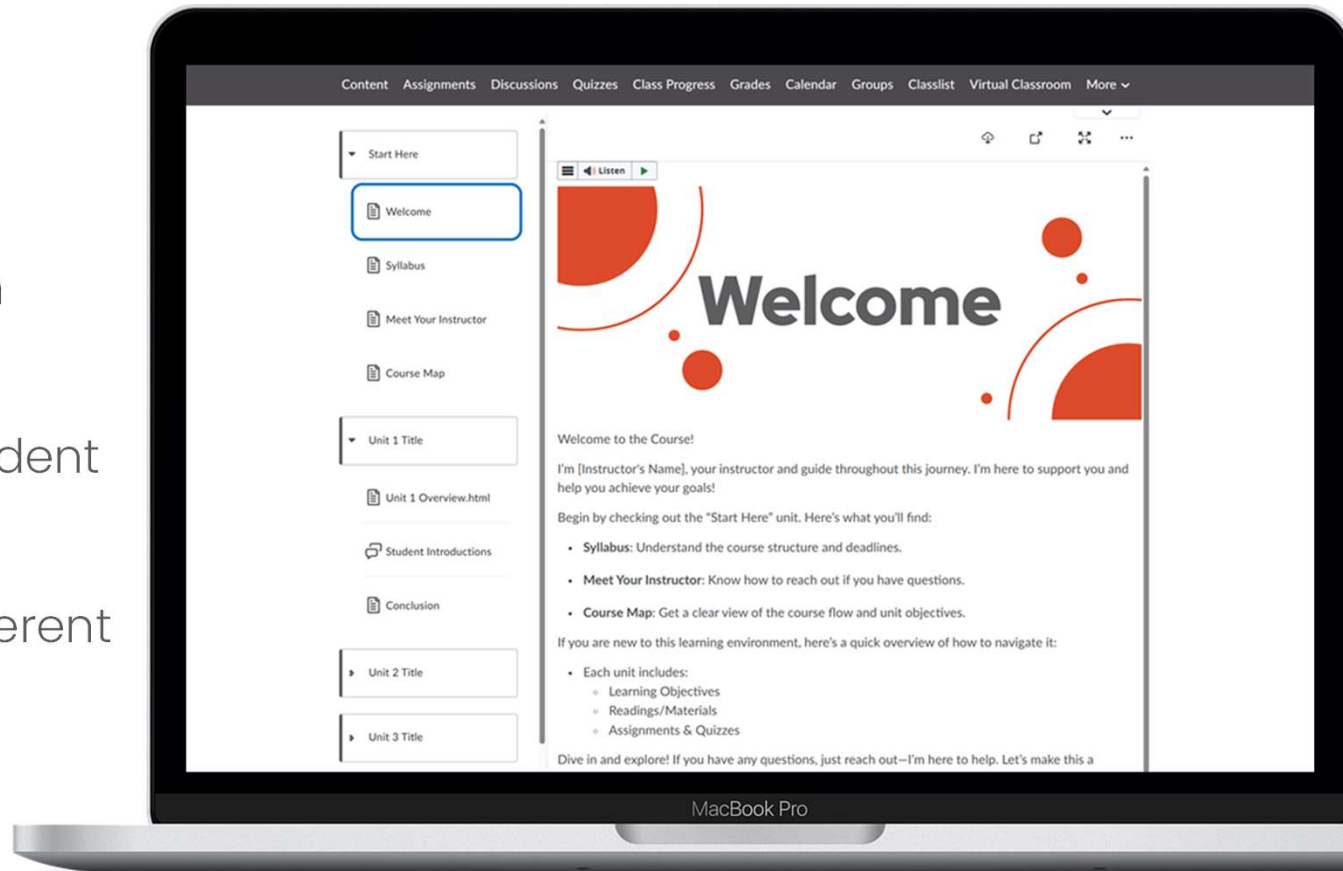


Analytics

Track student progress and performance

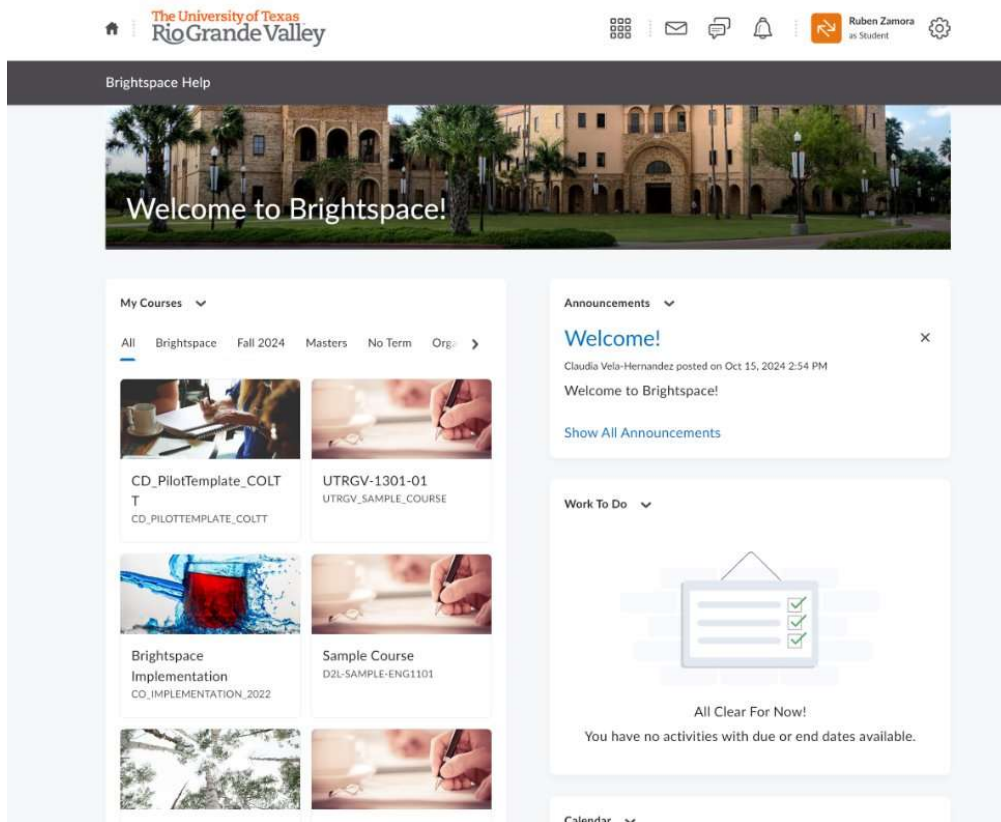
Benefits for Instructors

- Streamlined course management
- Time-saving automation features
- Detailed insights into student performance
- Flexibility to adapt to different teaching methods



Benefits for Students

- Intuitive and engaging learning environment
- Access to resources anytime, anywhere
- Personalized learning paths
- Interactive tools for collaboration



Implementation Timeline

Fall 2024

Planning and Presentation

- Integrate to our infrastructure: SIS, SSO, and current tools
- Train the trainers
- Develop resources
- Pilot group

Spring 2025

Pilot Live and Training

- Pilot feedback collection and adjustments
- Student training for pilot group
- Online and onsite faculty trainings for full implementations begin (Course Shell)
- Migration requests begin

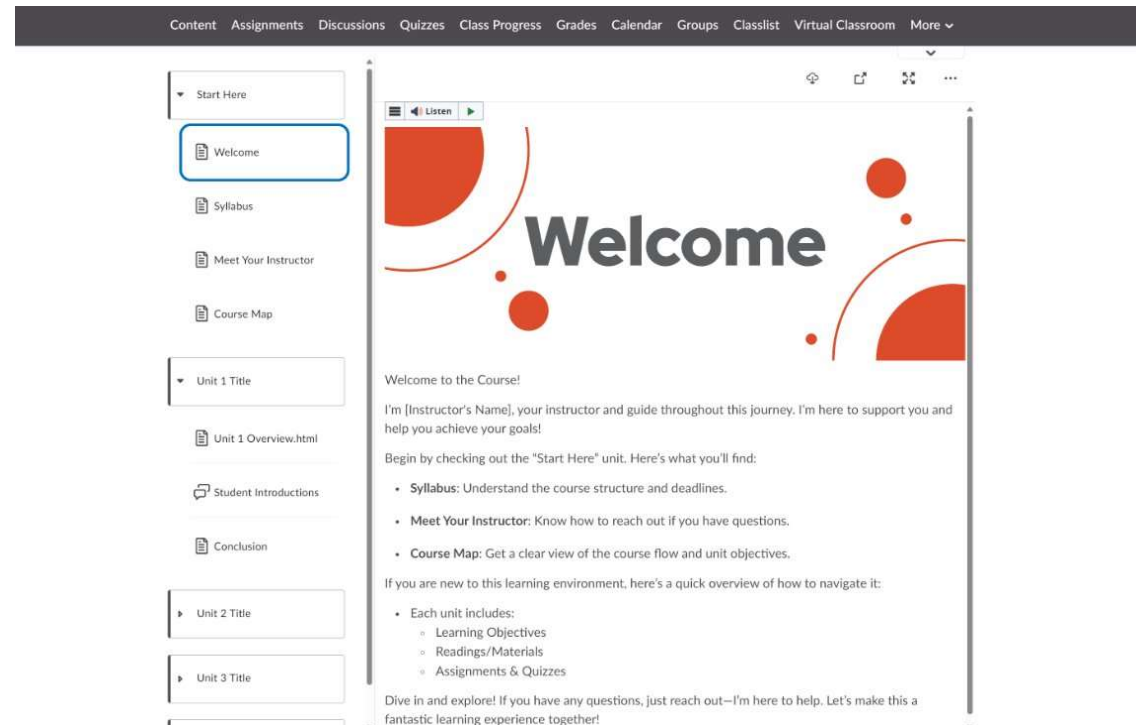
Summer 2025

Full Implementation

- All summer courses offered in Brightspace
- Continued training for all faculty, staff, and students
- Continuous support and optimization

Support

- Dedicated COLTT staff support team (Instructional Design & Help Desk)
- 24/7 Support with D2L
- Peer support (Pilot Group)
- Brightspace Community



Resources

Instructors

- Brightspace training (Online & F2F) starts first week of Feb
- Online resources and tutorials
- Brightspace Guided Training (Self-Paced)
- Brightspace Community

Students

- Brightspace training (Online & F2F) week before classes start
- Online resources and tutorials
- Brightspace Student Orientation (Self-Paced)
- Brightspace Community



Join the Brightspace Community

<https://community.d2l.com/brightspace>

Use your UTRGV email



Questions?