



REMNANTS OF HARVEY BRIEFING

1:00 PM CDT
Tuesday, August 22, 2017

Prepared by:
Barry Goldsmith



Overview

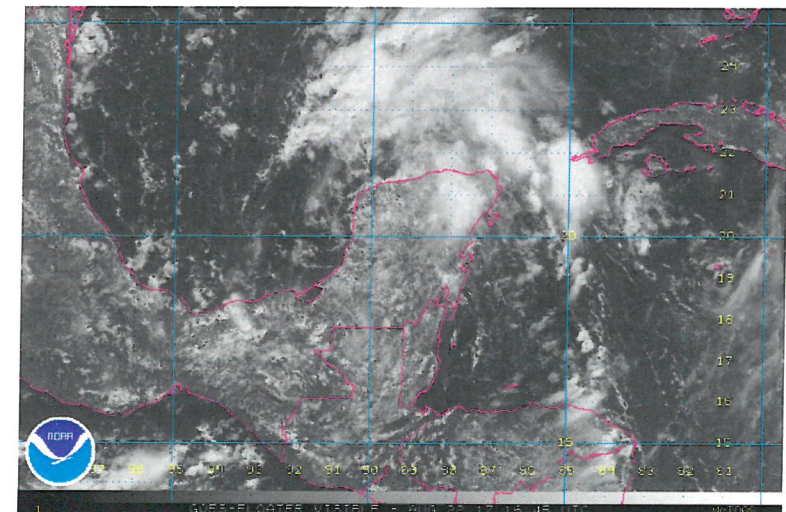
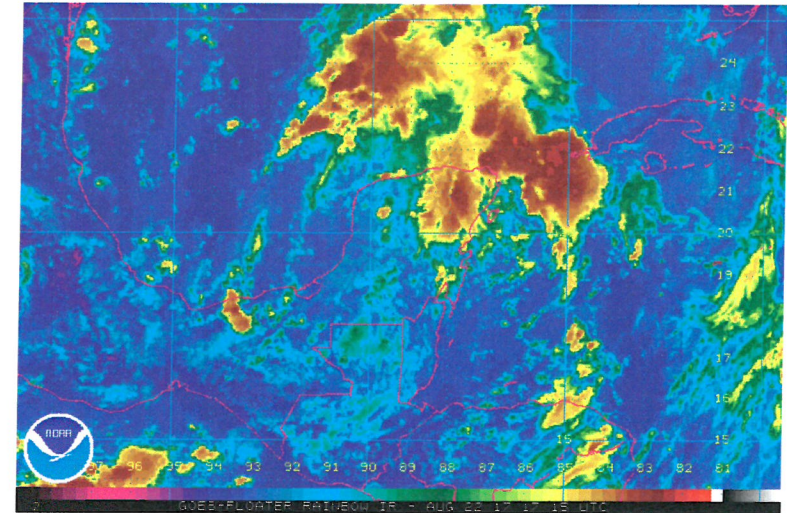


Brownsville/RGV

WEATHER FORECAST OFFICE

Potential Tropical Cyclone Harvey

- System still open wave and expected to remain so until Wednesday morning
- System expected to regenerate into a tropical cyclone, but intensity uncertain
- RGV impacts still uncertain, but beach (surf) flooding and some rain is likely
- Impact Timing: Friday 12 AM
Friday Sunset



Players on the Field

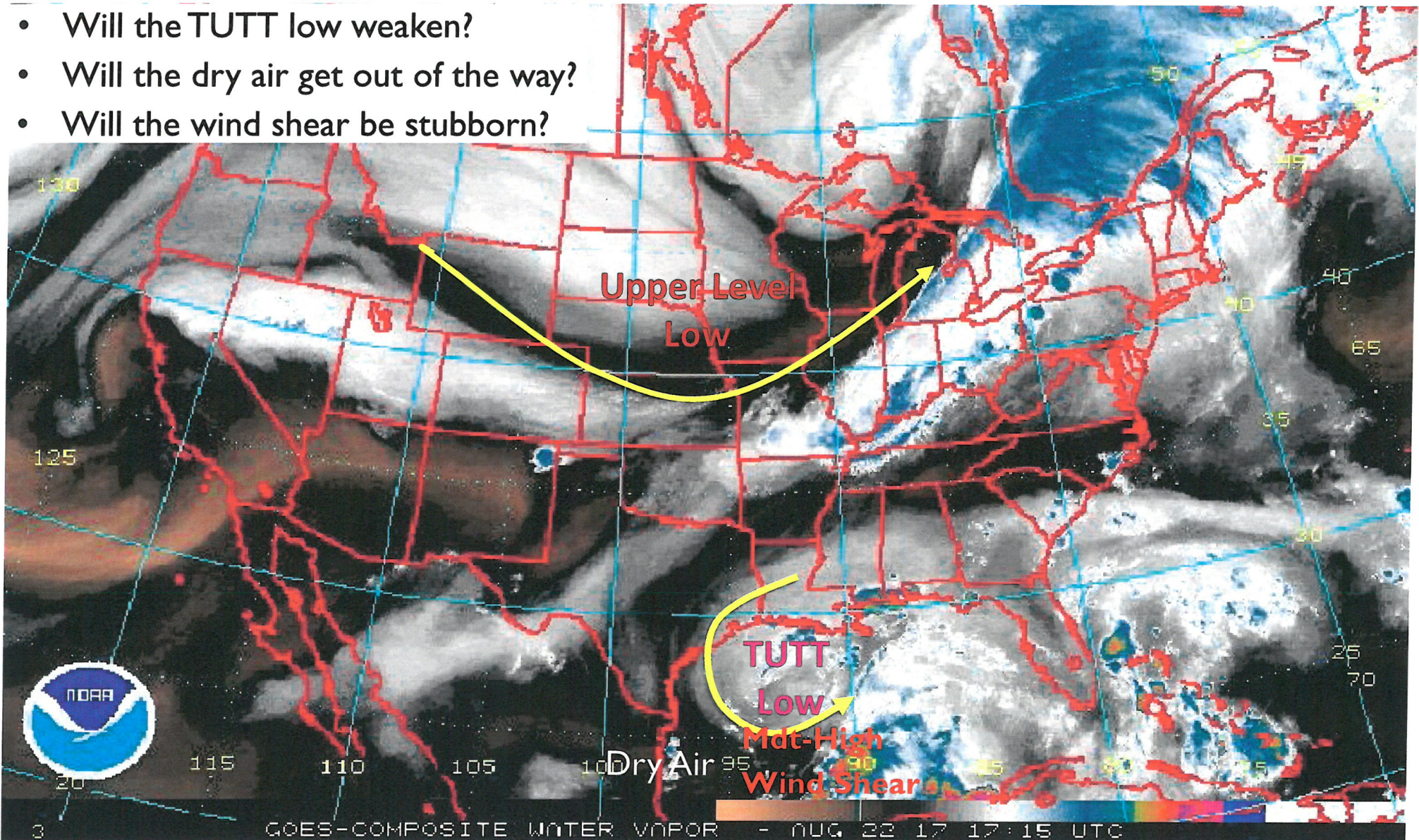
Potential Tropical Cyclone Harvey



Brownsville/RGV

WEATHER FORECAST OFFICE

- Will the TUTT low weaken?
- Will the dry air get out of the way?
- Will the wind shear be stubborn?



8/22/2017 1:47 PM

weather.gov/rgv

Tropical Weather Outlook

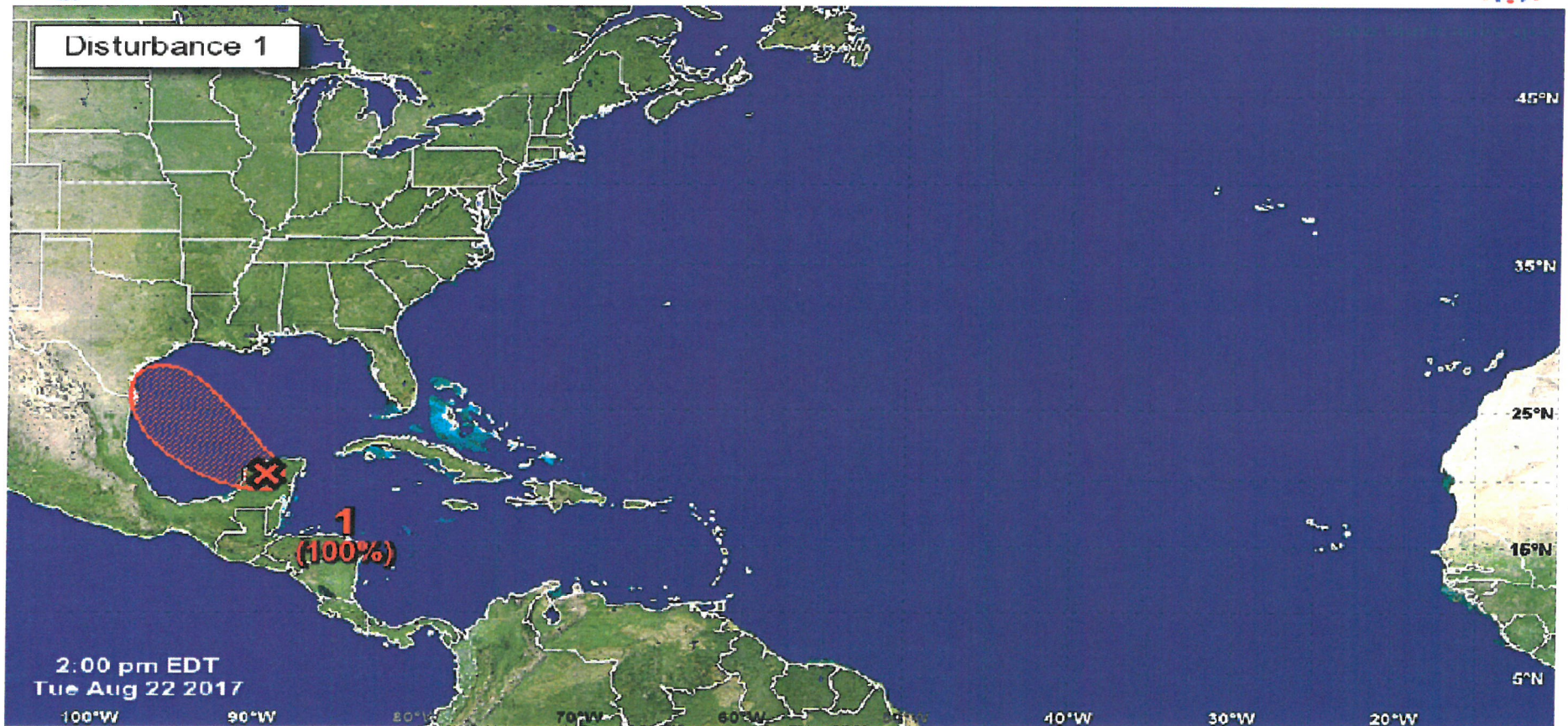


Brownsville/RGV
WEATHER FORECAST OFFICE

Potential Tropical Cyclone Harvey



Five-Day Graphical Tropical Weather Outlook National Hurricane Center Miami, Florida



- **System better organized Tuesday afternoon**
- **Expected to become Tropical Depression or Storm on Wednesday**

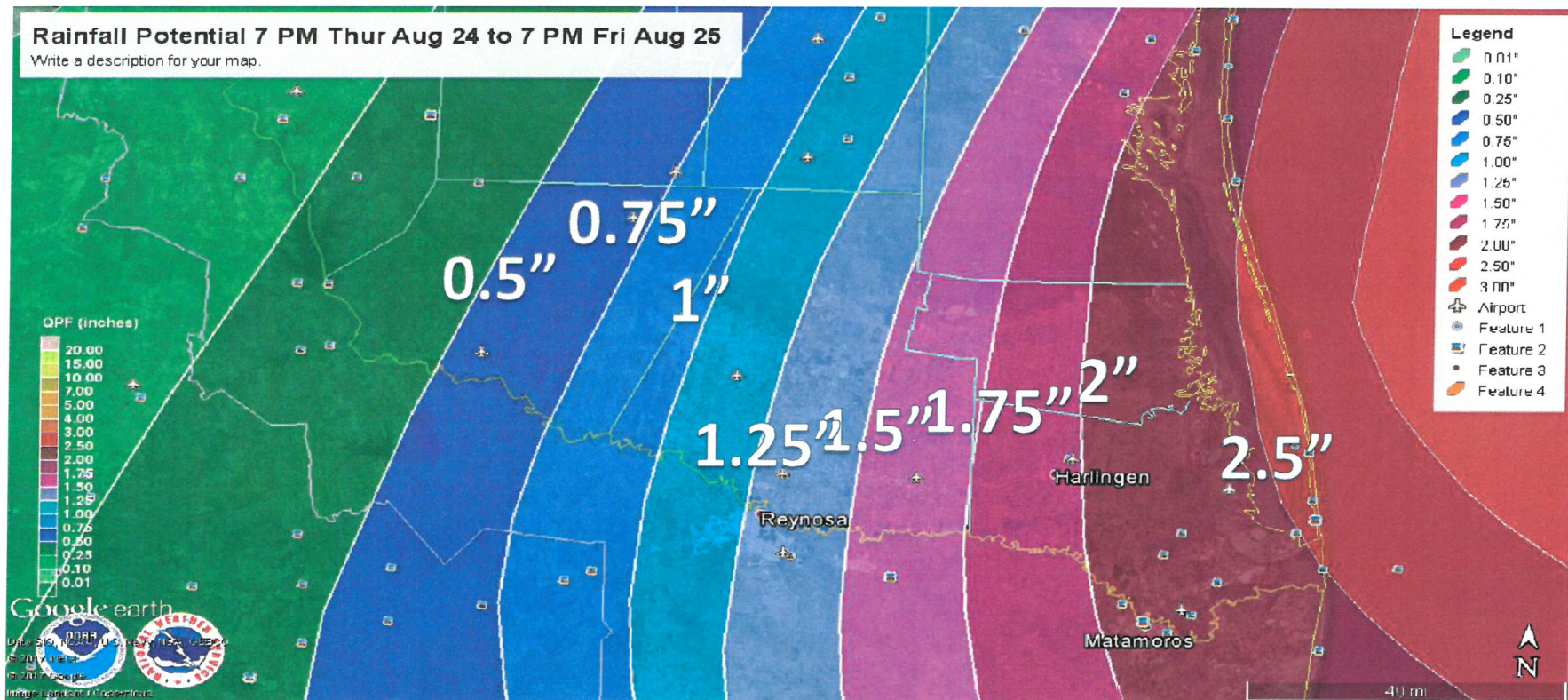
Potential Impact/Actions - Rain



Brownsville/RGV

WEATHER FORECAST OFFICE

Potential Tropical Cyclone Harvey



- Rainfall: 1.5-2.5" East of US 281; highest near beach.
Potential impact: nuisance flooding 1-2 feet high in poor drainage areas
- Clear drainage of debris through Thursday morning to improve outcomes

Potential Impact/Actions - Surf

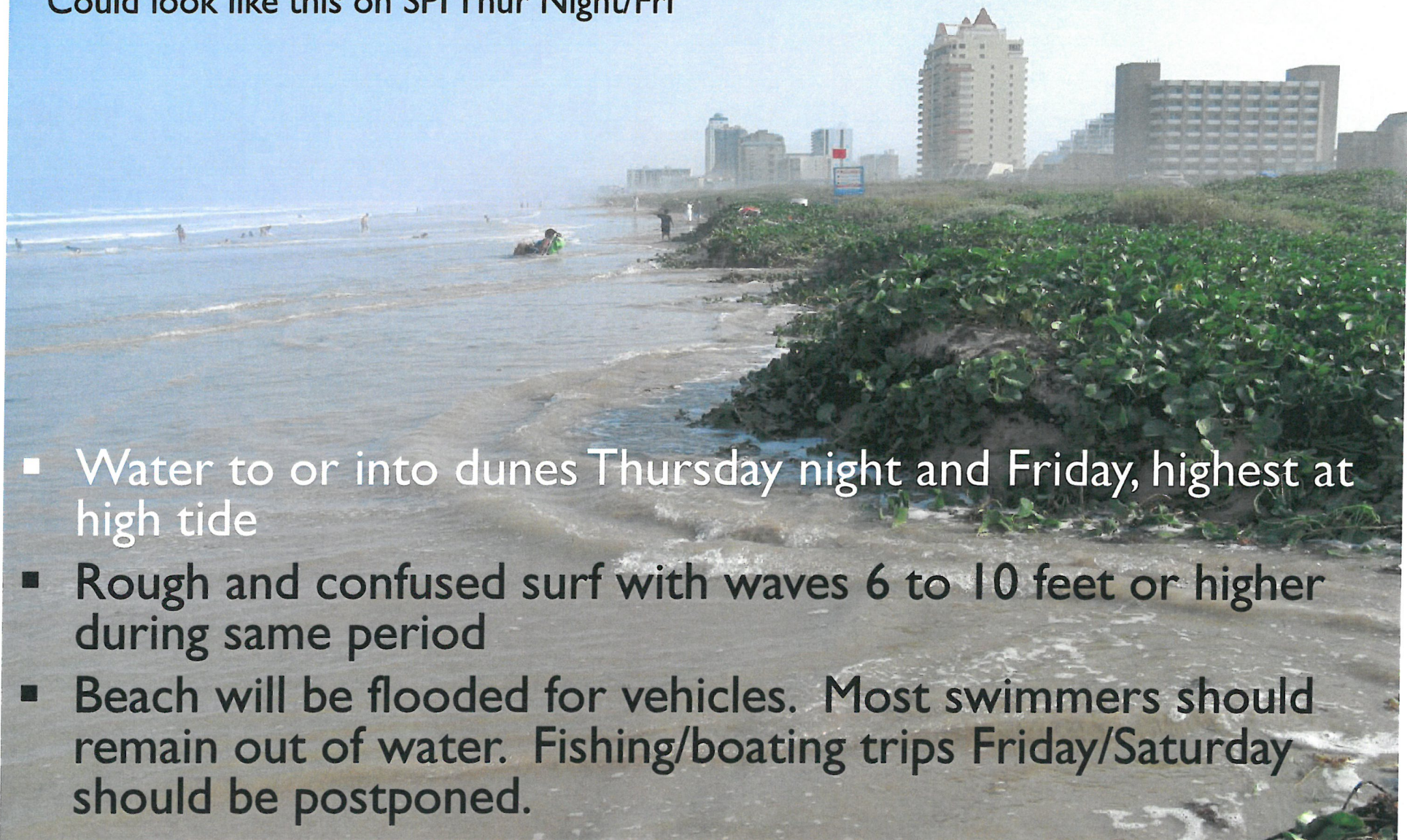


Brownsville/RGV

WEATHER FORECAST OFFICE

Potential Tropical Cyclone Harvey

Could look like this on SPI Thur Night/Fri



- Water to or into dunes Thursday night and Friday, highest at high tide
- Rough and confused surf with waves 6 to 10 feet or higher during same period
- Beach will be flooded for vehicles. Most swimmers should remain out of water. Fishing/boating trips Friday/Saturday should be postponed.

Potential Impact/Actions - Wind

Potential Tropical Cyclone Harvey



Brownsville/RGV

WEATHER FORECAST OFFICE

- Minor damage to unfastened lightweight objects is possible along the shore
- Tie down or move indoors tents, volleyball nets, trampolines, beach furniture, temporary structures by Thursday afternoon
- Tie down other lightweight objects (lawn furniture, etc) inland in case of 35 mph gusts