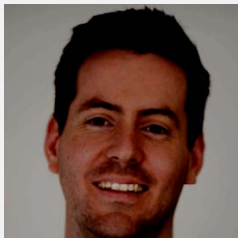


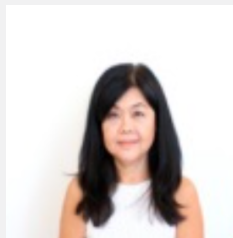


ONLINE PHOTO SUBMITTAL REQUIREMENTS

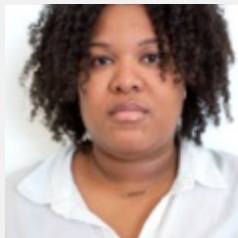
Unacceptable ID Photos



- ✗ Too Close
- ✗ Too Dark



- ✗ Too Far



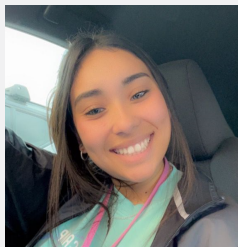
- ✗ No Head Cropping
- ✗ No Off-Center Photo



- ✗ No Hats
- ✗ No Mask



- ✗ No Hair or Shadows
Across Face



- ✗ No Busy Background
- ✗ No Photos In Vehicle

Acceptable ID Photo



- ✓ Photo is in color, clear, sharp and in focus with minimum reflective light on the face and proper lighting, with no shadows. No dim lighting, photo is bright.
- ✓ Head, neck and top of shoulders are visible, straight and centered with clear gap around the sides and top of head. No part of the head is cut off.
- ✓ Plain white or light gray background with strong contrast.
- ✓ No hats, head coverings, or head bands, unless for religious or medical purposes.
- ✓ Glasses may be worn but eyes must be clearly visible with no reflection on lenses.

Please contact us at:

✉ cardservices@utrgv.edu

☎ 956.665.7276

🖱 utrgv.edu/vonecard

UTRGV[™]

.....
Auxiliary Business Services