

UTRGV  
**COUNSELOR UPDATE**

— 2016 —

WELCOME

---

# Undergraduate Admissions

UTRGV Student Demographics	Fall 2015	Fall 16
	Final	as of 08.23.16
Entering Freshmen Cohort	4181	3924
Average ACT	19.51	19.93
Average SAT	948	952
Valedictorian	18	20
Salutatorian	16	20
Top 10%	709	805
Top 25%	1853	1980
TSI/Remediation Required	12.9%	9.9%

# Undergraduate Admissions



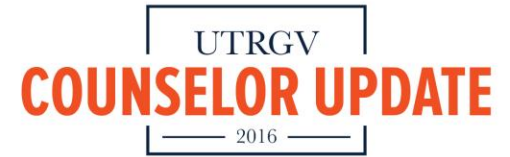
It all begins by completing the admissions application through [ApplyTexas.org](http://ApplyTexas.org)

Process opened on August 1, for 2016-2017

Priority Admissions Deadlines:

- Fall and Summer-February 1
- Spring- November 1

# Undergraduate Admissions



## Dual Credit-Need Official College Transcript

We are going to need a college transcript if the student took dual credit classes. We know this coursework is often listed on the high school transcript but we need to receive this information on an official college transcript from the granting institution.

# Undergraduate Admissions



UTRGV has adopted the ApplyTexas essay prompts. Students will have the opportunity to select and answer 1 of 3 essay prompts. Essay writing is a great opportunity for students to express themselves and give a glimpse of who they are, their passions, concerns or what excites them. Remind students not to write about what they think we want to hear but rather to use the essay as an opportunity to share an introspection about themselves. The space provided allows for up to 650 words. Students can select from the following 3 essays:

**Essay Topic A:**

What was the environment in which you were raised? Describe your family, home, neighborhood, or community, and explain how it has shaped you as a person.

**Essay Topic B:**

Some students have an identity, an interest, or a talent that defines them in an essential way. If you are one of these students, then tell us about yourself.

**Essay Topic C:**

You've got a ticket in your hand - Where will you go? What will you do? What will happen when you get there?

# Undergraduate Admissions



## High School Transcript

- Difference between Official Transcript and Final Official Transcript
- When to submit and how information contained is used
- Ways to submit: Paper vs Electronic-TREX, Parchment

# Undergraduate Admissions

## TREX-a standard approach

- Going Green
- BISD-Superintendent district mandate
- TREX process
- Benefits

# Undergraduate Admissions

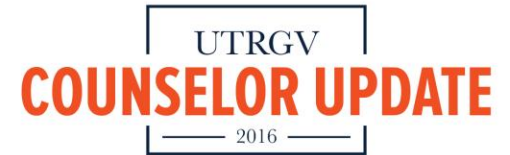


## Test Scores-SAT/ACT

- Importance of testing multiple times beginning with sophomore year
- Voucher/fee waivers
- UTRGV Average scores



# Undergraduate Admissions



## AP Classes

- Taking an AP or advanced placement course is an excellent way to show a student's abilities for handling college level courses before enrolling with the university.
- While not required, students who perform well do stand out from other applicants by allowing the admissions team to better understand each applicant's abilities and strengths.

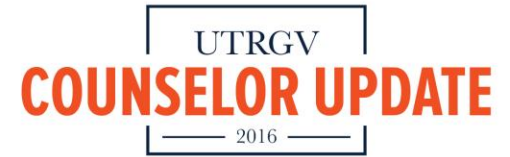
# Undergraduate Admissions



## Extracurricular Activities

- On ApplyTexas.org, students have the opportunity to tell us what sets them apart and how they have given back or been involved with the community.
- Our holistic review process takes the information contained in this section into consideration during the admissions process.

# Undergraduate Admissions



## Admissions Decision

- Importance of meeting priority deadline
- Admissions Decisions-Approvals Denials
- Notifications sent:

My Assist-online notification

Acceptance Letter mailed

# Undergraduate Admissions



## UTRGV Holistic Review Process

We take a holistic approach to admissions so we get a well-rounded picture of who each applicant is and how they would impact our campus community. All UTRGV entering freshman applicants will have their own admissions profile created from all the information submitted, and admissions decisions will be based on that profile and their accomplishments in high school.

Factors for review will include:

- Class Rank
- Prior College Hours
- College Entrance Exams (SAT/ACT)
- Rigor of High School Courses Completed
- Leadership Experience
- Community Involvement
- Career Goals
- ApplyTexas Essay

# Undergraduate Admissions



## Supplemental Documents Needed

### Meningitis:

- **Provide documentation for MENINGITIS VACCINE**

- Beginning Spring 2014, all new students under the age of 22 must submit evidence of receiving the meningitis vaccine or booster shot (administered within the past five years) or evidence of exemption before they can enroll.

# Undergraduate Admissions



## Supplemental Documents Needed

TSI Scores or proof of exemption:

- **Check your TSI STATUS** – What is TSI? The Texas Success Initiative (TSI) requires all students test prior to enrolling in college-level coursework in the areas of reading, math and writing. You need these scores for academic placement in your classes.

Profiles in Excellence

Jorge Alejandro Rodriguez

Elizabeth Torres

Angela Ruby Gonzalez

Daniel Ruiz

Daryela A. Cepeda

Steven Sargent

Cassandra Torres

Jennifer Cerda

## Profiles In Excellence



**September 6, 2016**

**Jorge Alejandro Rodriguez**

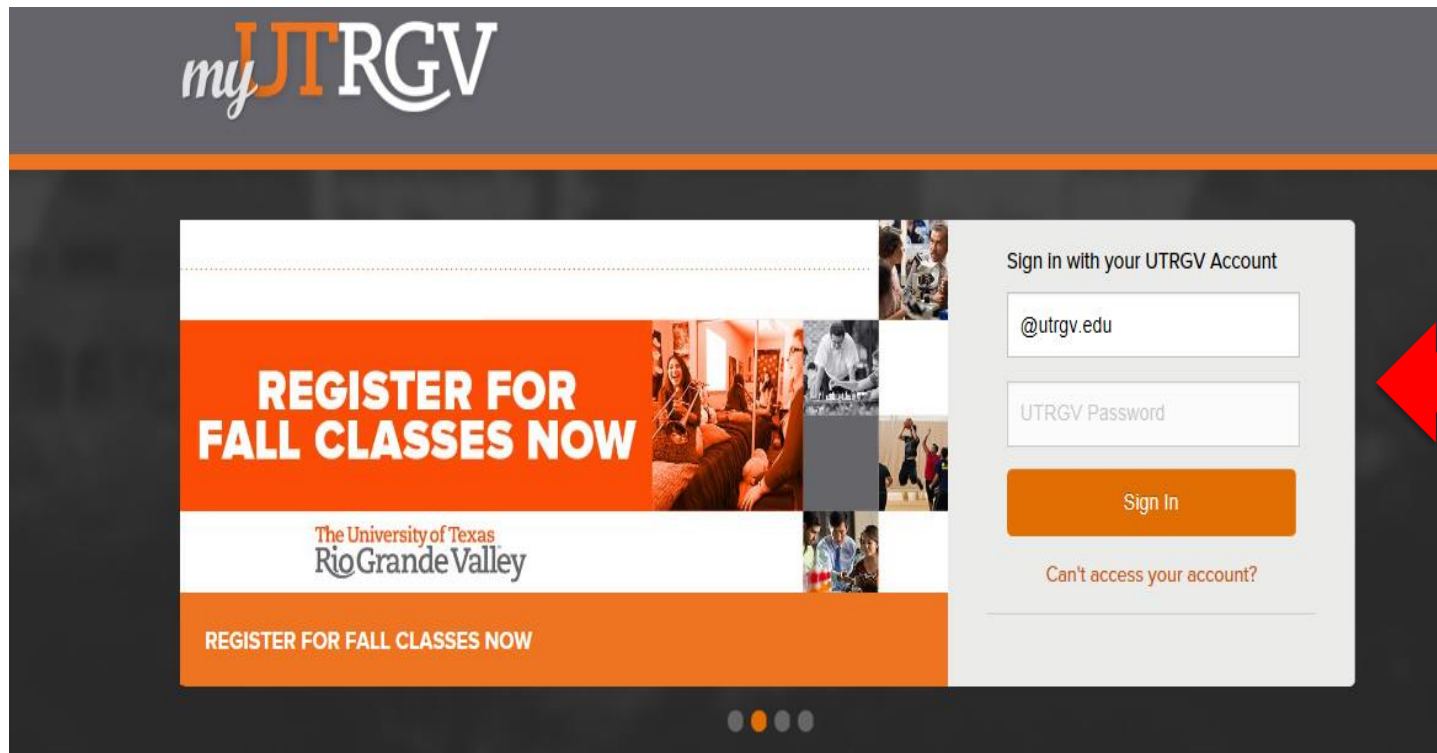
### **Why UTRGV?**

Like many people, I wanted to leave the Rio Grande Valley and pursue my degree elsewhere. However, UTRGV felt appropriate since I am a first-generation college student. Staying close to my family was an important factor because their support and guidance has helped me accomplish my goals. Other than UTRGV being close to home, the culture shared throughout the university is awesome. UTRGV is truly one of a kind.

[Read more.](#)

# Student Document Portal

- Go to: *My.utrgv.edu*
  - Log in with *Username* and *Password*



The screenshot shows the myUTRGV website interface. At the top left is the myUTRGV logo. Below it is a large banner with the text "REGISTER FOR FALL CLASSES NOW" and "The University of Texas Rio Grande Valley". To the right of the banner is a sign-in form titled "Sign in with your UTRGV Account". The form contains two input fields: the first is labeled "@utrgv.edu" and the second is labeled "UTRGV Password". Below the input fields is an orange "Sign In" button. A red arrow points to the right side of the form area. At the bottom of the page, there are four small colored circles (grey, orange, grey, grey).



# Student Document Portal

- Under Applications, Select **ASSIST**

Home | Enrollment Reports | Help & Downloads

Hi, Ban

Announcements

Entries

Applications

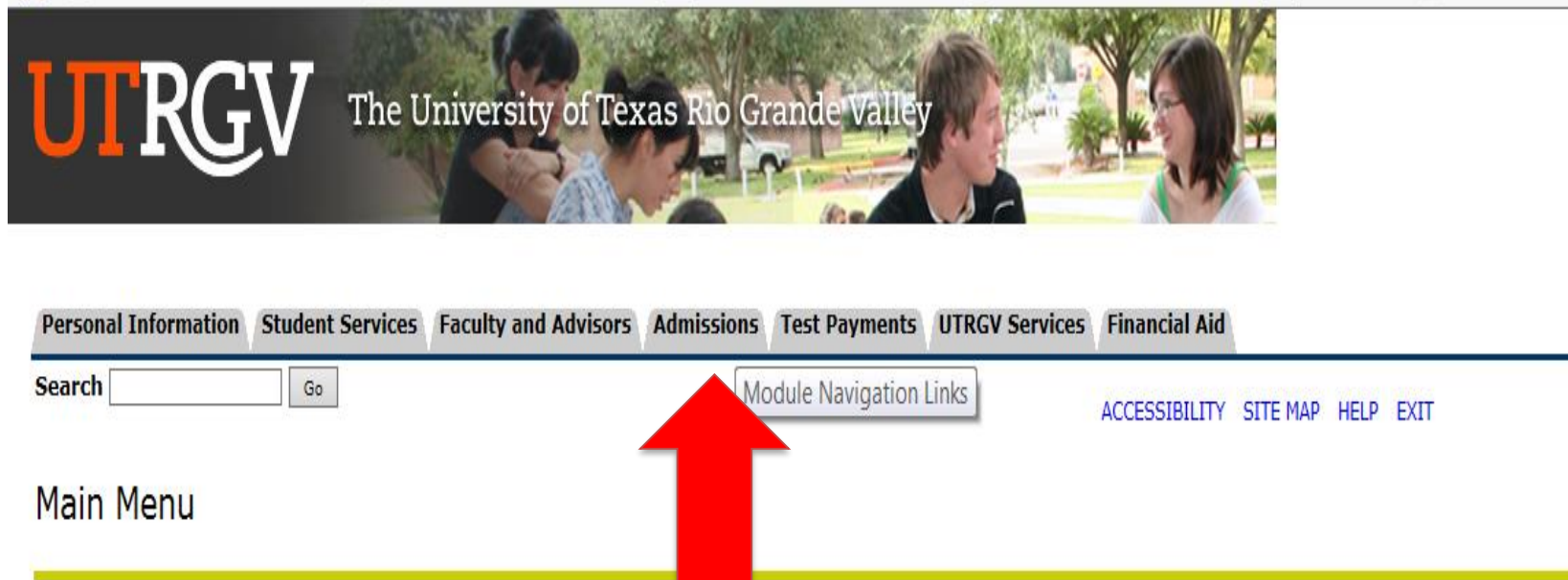
ASSIST | Office 365 | Blackboard | vPrint | Housing | Career Connection | ServiceNow | Oracle 24/7

Email

Weather

# Student Document Portal

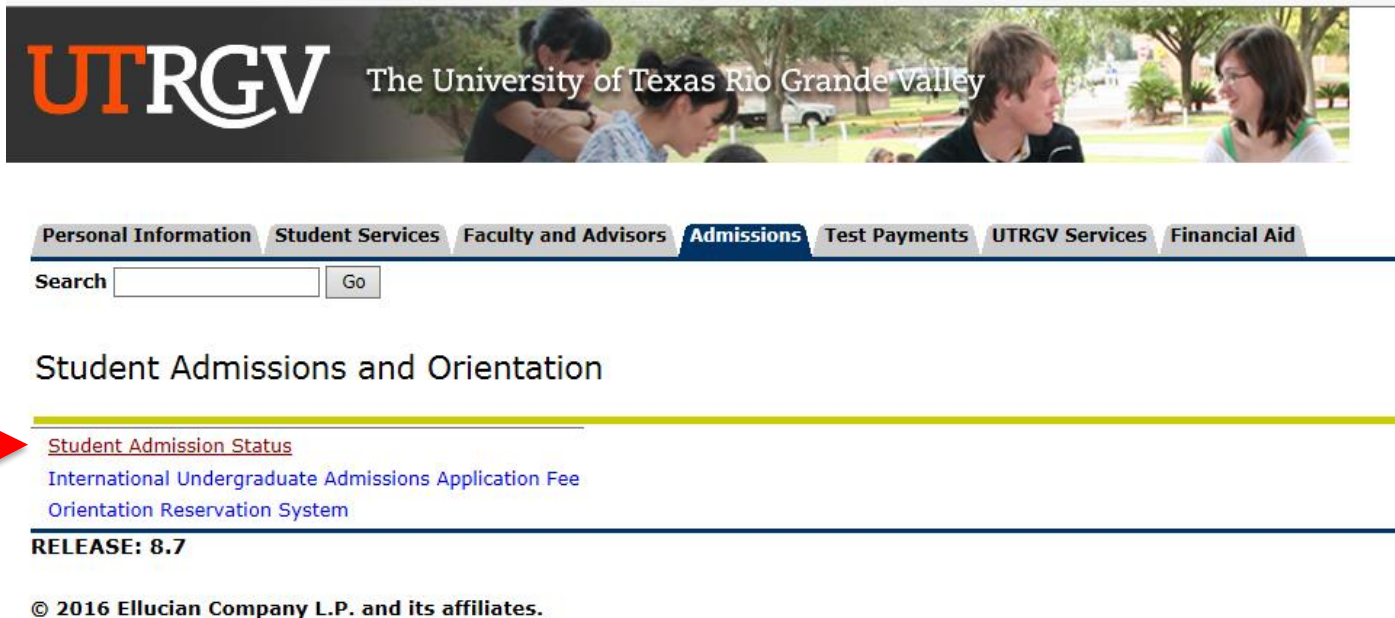
- Select *Admissions Tab*



The screenshot shows the top navigation bar of the UTRGV website. On the left is the UTRGV logo and the text "The University of Texas Rio Grande Valley" over a background image of students. The navigation bar contains several tabs: "Personal Information", "Student Services", "Faculty and Advisors", "Admissions", "Test Payments", "UTRGV Services", and "Financial Aid". Below the tabs is a search bar with a "Go" button and a "Module Navigation Links" button. To the right of the search bar are links for "ACCESSIBILITY", "SITE MAP", "HELP", and "EXIT". A large red arrow points upwards from the bottom of the page towards the "Admissions" tab.

# Student Document Portal

- Select *Student Admission Status*



**UTRGV** The University of Texas Rio Grande Valley

Personal Information Student Services Faculty and Advisors **Admissions** Test Payments UTRGV Services Financial Aid

Search  Go

Student Admissions and Orientation

[Student Admission Status](#)

[International Undergraduate Admissions Application Fee](#)

[Orientation Reservation System](#)

RELEASE: 8.7

© 2016 Ellucian Company L.P. and its affiliates.

# Student Document Portal

- Select [here](#)



Personal Information Student Services Faculty and Advisors **Admissions** Test Payments UTRGV Services Financial Aid

Search  Go

[SITE MAP](#) [HELP](#) [EXIT](#)

SID: X00000001

Name: Test System, User

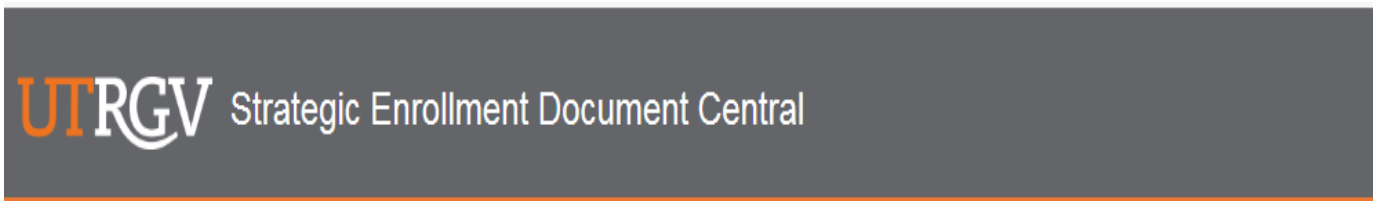
Application Term	Fall 2017-Estimated dates
Application Status	Incomplete items outstanding
Application Status Date	31-AUG-2016
Student Major	BBA in Computer Info Systems
Application Decision	Pending

To review your admissions checklist and see the status of submitted documents and/or view and upload missing documents, please click [here](#). You will be routed to a student portal and will be required to log in using your UTRGV username and password. If you experience any difficulty uploading documents, please call (956) 665-2548 or (956) 665-7575.

RELEASE: 8.7

# Student Document Portal

- Enter *Username* and *Password*




Please Use your Credentials to Login

Username:

Password:

Remember me on this computer



# Student Document Portal

 Strategic Enrollment Document Central Welcome, Michael! [Logout](#)

**Missing Items by Department** (the number on each tab indicates missing or incomplete items or items pending to be processed)

Admissions (2)

### Missing Documents

\* All application documents must be received, reviewed and complete before an admission decision can be made.

[See status definition](#)

Year/Term	Document	Document Type	Message	Comment	Request Date	Status
Fall 2017- Estimated dates	High School Transcript	Admissions	IDEA Quest College Preparatory-An unofficial copy of your transcript(s) may be uploaded or sent directly from your high school. However an official transcript will need to be sent electronically from your high school once you have graduated.		8/9/2016	Missing
Fall 2017- Estimated dates	Official SAT or ACT Scores	Admissions	Official scores need to be received electronically from the testing agency. Score sheets with the students name clearly visible may be uploaded however will be considered unofficial.		8/9/2016	Received
Fall 2017- Estimated dates	College Transcript	Admissions	South Texas College-If you participated in dual enrollment while in high school, an unofficial copy of your transcript(s) are required. An unofficial copy may be uploaded however an official will need to be sent electronically from the college or university that you completed coursework from.		8/31/2016	Missing

### Uploaded Documents

#### Upload Missing Items

Allowed file types .doc .docx .gif .jpeg .jpg .pdf .png

- Upload Documents
- Check Document Status

# Student Document Portal

- To review definitions of *Status Codes*

To **View**  
Status  
Legend

**Status Legend**

Status Code	Description
MISSING	Document is missing
UPLOADED	Document was uploaded successfully, pending to be reviewed.
IN PROGRESS	Received item pending review.
RECEIVED	Received item pending review.
COMPLETE	Received, reviewed and satisfactory.
INCOMPLETE	Received, reviewed and unsatisfactory. Updated and/or additional document(s) needed.

Background interface elements:  
- UTRGV Strateg...  
- Missing Items by Department (the r...  
- Admissions (2)  
- Missing Documents  
- \* All application documents must be rece...  
- See status definition  
- Table with columns: Year/Term, Document, Document Type, Comment, Request Date, Status  
- Uploaded Documents  
- Upload Missing Items  
- Browse...  
- -Select Missing Item-  
- add a note if any.  
- Upload  
- Allowed file types .doc .docx .gif .jpeg .jpg .pdf .png

# Student Document Portal

- To *Upload* a document, select *Browse*.

UTRGV Strategic Enrollment Document Central Welcome, Michael! Logout

Missing Items by Department (the number on each tab indicates missing or incomplete items or items pending to be processed)

Admissions (2)

## Missing Documents

\* All application documents must be received, reviewed and complete before an admission decision can be made.

[See status definition](#)

Year/Term	Document	Document Type	Message	Comment	Request Date	Status
Fall 2017- Estimated dates	High School Transcript	Admissions	IDEA Quest College Preparatory-An unofficial copy of your transcript(s) may be uploaded or sent directly from your high school. However an official transcript will need to be sent electronically from your high school once you have graduated.		8/9/2016	Missing
Fall 2017- Estimated dates	Official SAT or ACT Scores	Admissions	Official scores need to be received electronically from the testing agency. Score sheets with the students name clearly visible may be uploaded however will be considered unofficial.		8/9/2016	Received
Fall 2017- Estimated dates	College Transcript	Admissions	South Texas College-If you participated in dual enrollment while in high school, an unofficial copy of your transcript(s) are required. An unofficial copy may be uploaded however an official will need to be sent electronically from the college or university that you completed coursework from.		8/31/2016	Missing

## Uploaded Documents

### Upload Missing Items

-Select Missing Item-

add a note if any.

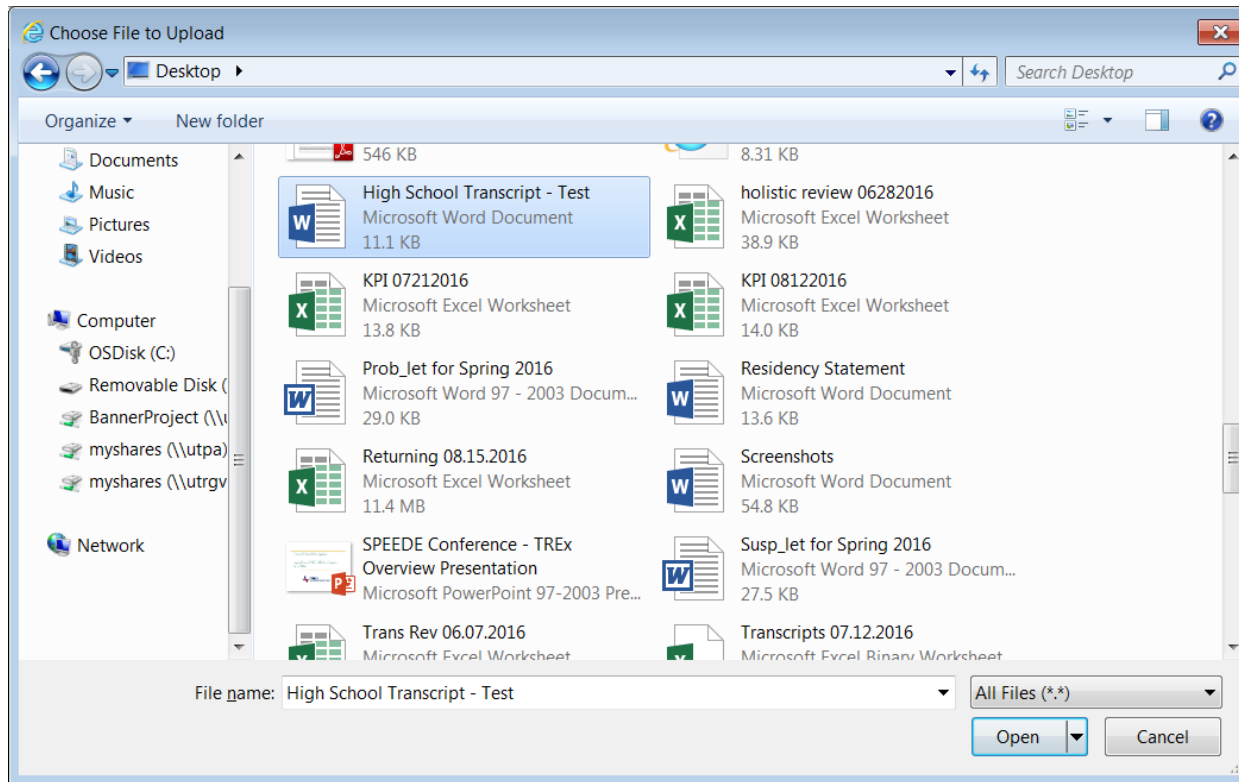
Allowed file types .doc .docx .gif .jpeg .jpg .pdf .png





# Student Document Portal

- Select the **Document**



# Student Document Portal

Select the *Missing Item*

UTRGV Strategic Enrollment Document Central Welcome, Michael! Logout

Missing Items by Department (the number on each tab indicates missing or incomplete items or items pending to be processed)

Admissions (2)

### Missing Documents

\* All application documents must be received, reviewed and complete before an admission decision can be made.

[See status definition](#)

Year/Term	Document	Document Type	Message	Comment	Request Date	Status
Fall 2017- Estimated dates	High School Transcript	Admissions	IDEA Quest College Preparatory-An unofficial copy of your transcript(s) may be uploaded or sent directly from your high school. However an official transcript will need to be sent electronically from your high school once you have graduated.		8/9/2016	Missing
Fall 2017- Estimated dates	Official SAT or ACT Scores	Admissions	Official scores need to be received electronically from the testing agency. Score sheets with the students name clearly visible may be uploaded however will be considered unofficial.		8/9/2016	Received
Fall 2017- Estimated dates	College Transcript	Admissions	South Texas College-If you participated in dual enrollment while in high school, an unofficial copy of your transcript(s) are required. An unofficial copy may be uploaded however an official will need to be sent electronically from the college or university that you completed coursework from.		8/31/2016	Missing



### Uploaded Documents

#### Upload Missing Items

Allowed file types .doc .docx .gif .jpeg .jpg .pdf .png

# Student Document Portal



- View the document by selecting *View*

UTRGV Strategic Enrollment Document Central Welcome, Michael! Logout

Missing Items by Department (the number on each tab indicates missing or incomplete items or items pending to be processed)

Admissions (2)

### Missing Documents

\* All application documents must be received, reviewed and complete before an admission decision can be made.

[See status definition](#)

Year/Term	Document	Document Type	Message	Comment	Request Date	Status
Fall 2017- Estimated dates	High School Transcript	Admissions	IDEA Quest College Preparatory--An unofficial copy of your transcript(s) may be uploaded or sent directly from your high school. However an official transcript will need to be sent electronically from your high school once you have graduated.		8/9/2016	Uploaded
Fall 2017- Estimated dates	Official SAT or ACT Scores	Admissions	Official scores need to be received electronically from the testing agency. Score sheets with the students name clearly visible may be uploaded however will be considered unofficial.		8/9/2016	Received
Fall 2017- Estimated dates	College Transcript	Admissions	South Texas College--If you participated in dual enrollment while in high school, an unofficial copy of your transcript(s) are required. An unofficial copy may be uploaded however an official will need to be sent electronically from the college or university that you completed coursework from.		8/31/2016	Missing

### Uploaded Documents

Year/Term	Document	Note	Date Uploaded	
Fall 2017- Estimated dates	High School Transcript		9/1/2016 8:00:03 AM	<a href="#">View</a>

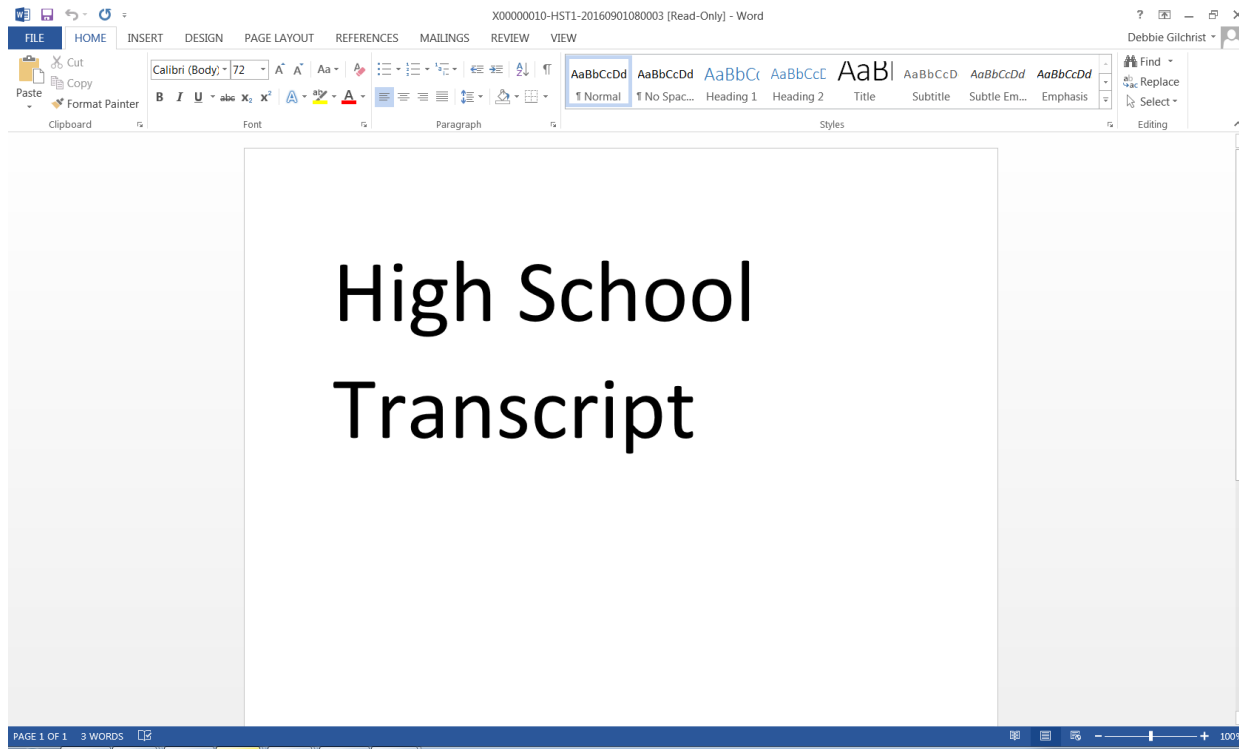


### Upload Missing Items

-Select Missing Item-

add a note if any.

# Student Document Portal



# Undergraduate Admissions



## Contact us:

- **Debbie Gilchrist**  
Director of Undergraduate Admissions  
[debbie.gilchrist@utrgv.edu](mailto:debbie.gilchrist@utrgv.edu)  
956-665-2926
- **Maria Celeste Trevino**  
Associate Director – Application Processing & Operations  
[celeste.trevino@utrgv.edu](mailto:celeste.trevino@utrgv.edu)  
956-665-4043
- **Jorge Teniente**  
Associate Director – Application Processing Operations,  
Residency  
[jorge.teniente@utrgv.edu](mailto:jorge.teniente@utrgv.edu)  
956-665-2956
- **Javier Salinas**  
Assistant Director – Operations & Support  
[javier.salinas@utrgv.edu](mailto:javier.salinas@utrgv.edu)  
956-882-7305