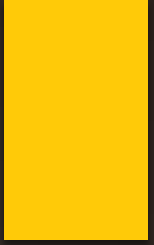


What are some
of the top
themes we
should focus on?

What promising
components/
recommendations
should we keep in
mind?

How can we
best engage our
communities in
planning?



What are some
of the top
themes we
should focus on?

What promising
components/
recommendations
should we keep in
mind?

How can we
best engage our
communities in
planning?

Evaluations...




Vision Stories





Themes and Messages



In your view, what are the three to five major thematic areas or substantive topics that need to be explicitly addressed in our strategic planning process and the final strategic planning document?

What did we
prioritize?



What did we prioritize?

Student Success	19
Mission/ Values/ Goals	13
Research	13
Resources	11
Community	10
Programs/Expansion	6
Cohesiveness	4
Processes	5
Medical Education	3
Branding	3
Academic Excellence	2
Bilingualism	2
Sustainability	2
Access vs. research	1
Other	4

What did we prioritize?

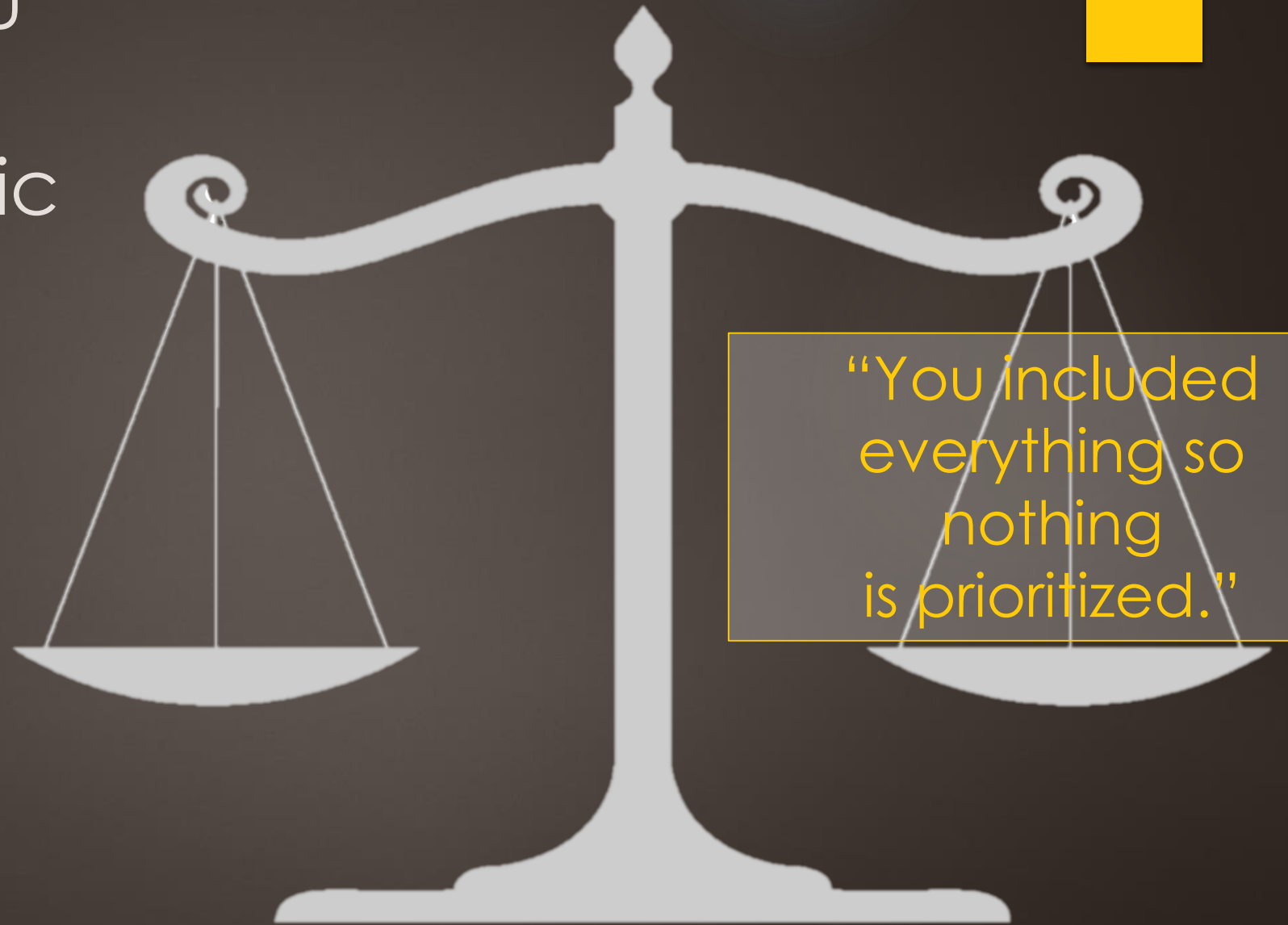
Student Success	57
Faculty Success (including Research & Development)	45
Staff Success	18
Medical School	45
Community Engagement (including Research on Area)	25
Institutional Mission/ Goals	14
Institutional Resources & Infrastructure	32
Institutional Culture	16

Student Success	19
Mission/ Values/ Goals	13
Research	13
Resources	11
Community	10
Programs/Expansion	6
Cohesiveness	4
Processes	5
Medical Education	3
Branding	3
Academic Excellence	2
Bilingualism	2
Sustainability	2
Access vs. research	1
Other	4

How would you
prioritize our
“major thematic
topics”?

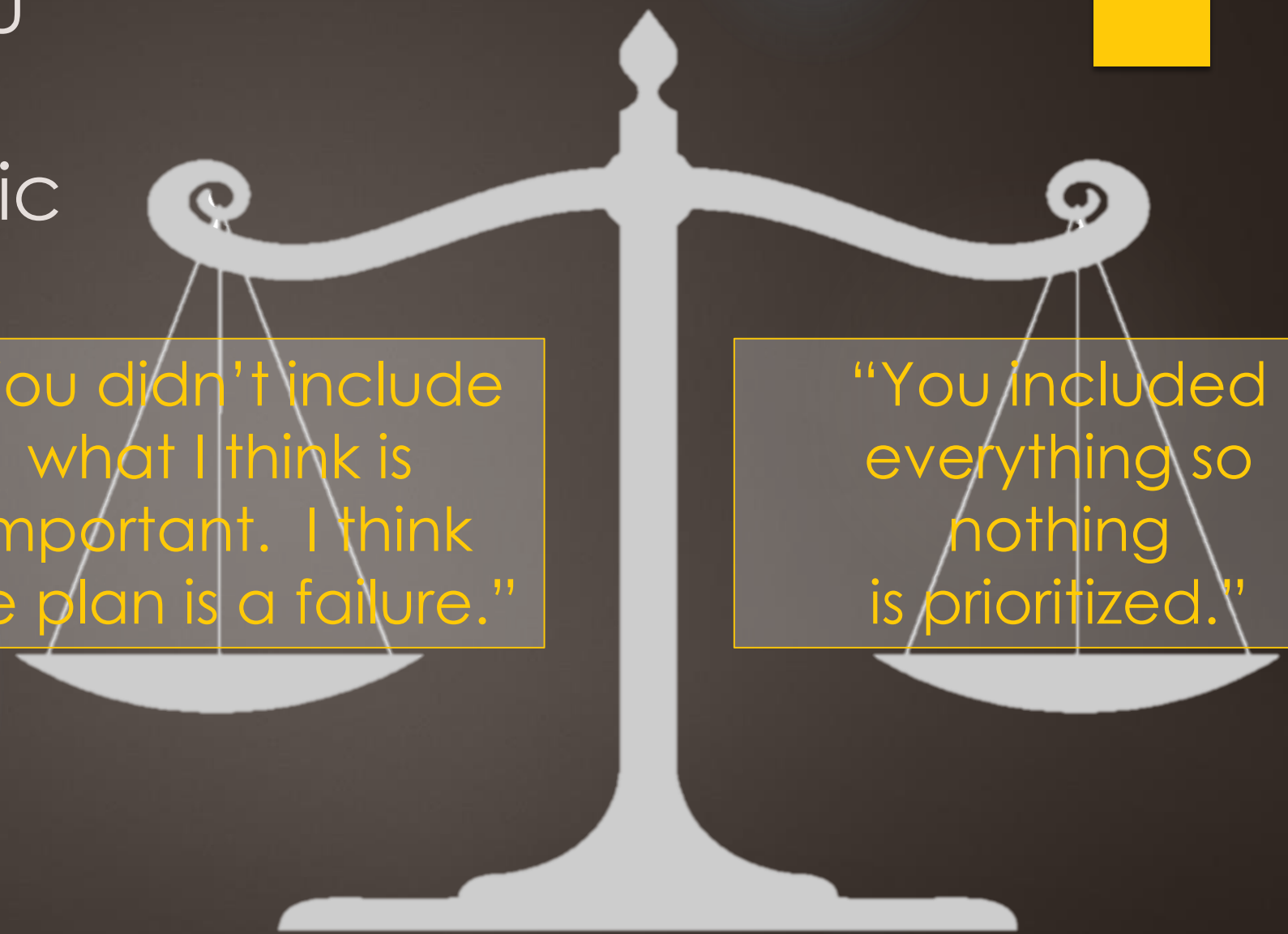


How would you
prioritize our
“major thematic
topics”?



“You included
everything so
nothing
is prioritized.”

How would you
prioritize our
“major thematic
topics”?



“You didn’t include
what I think is
important. I think
the plan is a failure.”

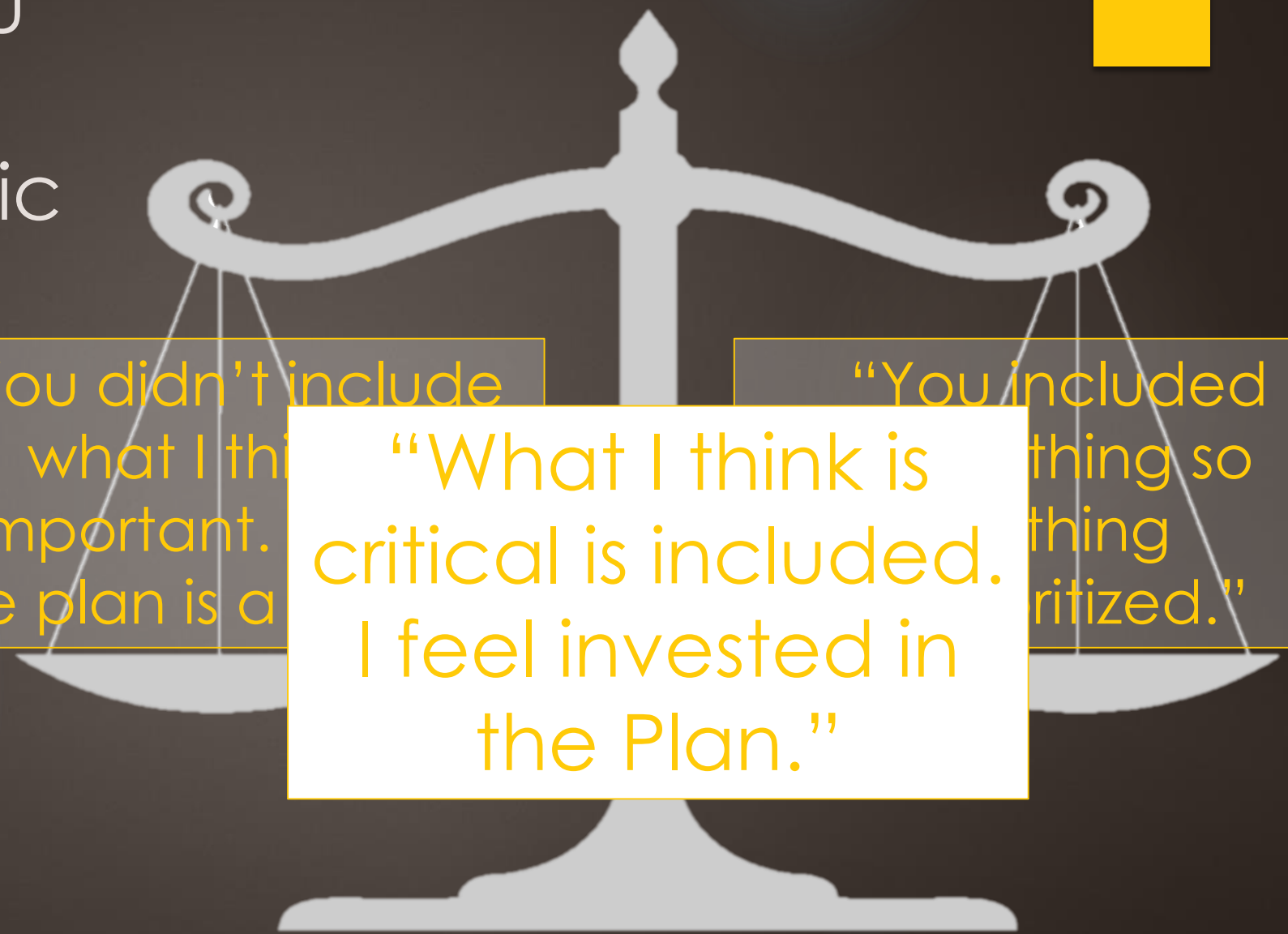
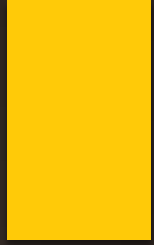
“You included
everything so
nothing
is prioritized.”

How would you
prioritize our
“major thematic
topics”?

“You didn’t include
what I think
is important.
The plan is a

“What I think is
critical is included.
I feel invested in
the Plan.”

“You included
something so
important
that I was pri-
oritized.”



Step One

- ▶ Pick up one envelope for your group.
- ▶ **Introduce yourselves.**
- ▶ Sort the priorities into one of three categories. If you're missing some priorities you see as critical, use your blank cards to add them.
- ▶ Keep in mind that the strategic plan has a specific purpose. Not all critical aspects of our functioning need to be included. They can be reflected in other ways.
- ▶ 15 minutes

Critical to Include in
the Plan
(20 maximum)

Important to Include
in the Plan

Less Important to
Include in the Plan
(16 minimum)

Step Two

- ▶ Look at the Critical and Important priorities. If you had to summarize them into a few themes, what would some of them be?
- ▶ Use complete sentences. Be aspirational. Write them as goals.
 - ▶ “We will...”
 - ▶ “We believe...”
 - ▶ “We can...”
- ▶ Leave your cards undisturbed.
- ▶ 15 minutes

Step Three



- ▶ Walk around to the other groups. Take a look at their brilliant ideas. Add checkmarks to ones that you particularly like.
- ▶ Don't check everything :)
- ▶ Take a break.
- ▶ Starting back up at 2:50.

Discussion



- ▶ What did you notice when you were trying to prioritize the topics? Did anything surprise you? Disappoint you? Motivate you?
- ▶ What did you notice about the themes that the groups constructed?



What are some
of the top
themes we
should focus on?



What promising
components/
recommendations
should we keep in
mind?

How can we
best engage our
communities in
planning?

Foundational Work

- ▶ Working Groups
 - ▶ 15 academic program working groups
 - ▶ 14 academic administration working groups
 - ▶ 15 operations administration working groups
 - ▶ 1 students-only working group
 - ▶ More than 400 faculty, administrators, staff, and students
- ▶ School of Medicine planning
- ▶ Aspirational in nature
- ▶ Often ignoring barriers

Step One

- ▶ Introduce yourselves
- ▶ Take no more than five minutes each to summarize to your group some of the important recommendations or points from the working group reports you read. A few extra copies are available if you forgot your notes. (about 20 minutes)
- ▶ As a group, considering the themes that will likely be included in the Plan, identify at least 10 **recommendations** or points that you think should be included in the strategic plan.
 - ▶ These can be from the working group reports, from your more recent experiences, from what you know of promising practices across the country, etc.
 - ▶ Imagine this as direct advice that you are giving to the writers of the Plan.
- ▶ 40 minutes total

Step Two



- ▶ Pair up with another group.
- ▶ Read their list of recommendations. Consider the group's list. Ask questions. Suggest revisions.
- ▶ Make sure that their final list is clear enough that a different group of people looking at it in a month or two will understand what they mean and how to incorporate the recommendation.
- ▶ 10 minutes



What are some
of the top
themes we
should focus on?



What promising
components/
recommendations
should we keep in
mind?



How can we
best engage our
communities in
planning?

Volunteers and Vision Stories